

▼ Shown from left to right: RC-506, RC-50, RC-2510, RC-154, RC-10010, RC-55, RC-1010



## The Industry Standard General Purpose Cylinder



### Saddles

All RC cylinders are equipped with hardened removable grooved saddles. For tilt and flat saddles, see the RC-Series accessory page.

Page: 10



### Base Plates

To ensure the stability of cylinders for lifting applications, base plates are available for 10, 25 and 50 ton RC cylinders.

Page: 10



### Specialty Attachments

For solving all kinds of application problems, specialty attachments are available for 5, 10 and 25 ton RC cylinders.

Page: 170

- Collar threads, plunger threads and base mounting holes enable easy fixturing (on most models)
- Designed for use in all positions
- Removable strap handles for unobstructed fixturing (RC-5013, RC-7513 and both 100 ton models)
- High strength alloy steel for durability
- Nickel plating available on most models (contact Enerpac for details)
- Heavy-duty return springs
- Baked enamel finish for increased corrosion resistance
- CR-400 coupler and dust cap included on all models
- Plunger wiper reduces contamination, extending cylinder life


▼ Stage lifting set up in Greece, where assembled pipes, 82 feet in length, were stage lifted with six RC-2514 cylinders.



▼ RC cylinder mounting attachments greatly extend the application possibilities (available for 5, 10, 15 and 25 ton cylinders).



# Single-Acting, General Purpose Cylinders



**Think Safety**  
 Manufacturer's rating of load and stroke are maximum safe limits.  
 Good practice encourages using only 80% of these ratings!

Page: 105

## ▼ QUICK SELECTION CHART

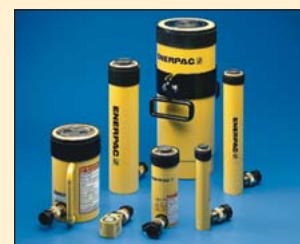
For complete technical information see next page.

Cylinder Capacity	Stroke	Model Number	Cylinder Effective Area	Oil Capacity	Collapsed Height	Weight
tons (maximum)	(in)		(in <sup>2</sup> )	(in <sup>3</sup> )	(in)	(lbs)
<b>5</b> (4.9)	.63	<b>RC-50**</b>	.99	.62	1.63	2.2
	1.00	<b>RC-51</b>	.99	.99	4.34	2.3
	3.00	<b>RC-53</b>	.99	2.98	6.50	3.3
	5.00	<b>RC-55*</b>	.99	4.97	8.50	4.1
	7.00	<b>RC-57</b>	.99	6.96	10.75	5.3
	9.13	<b>RC-59</b>	.99	9.07	12.75	6.1
<b>10</b> (11.2)	1.00	<b>RC-101</b>	2.24	2.24	3.53	4.0
	2.13	<b>RC-102*</b>	2.24	4.75	4.78	5.1
	4.13	<b>RC-104</b>	2.24	9.23	6.75	7.2
	6.13	<b>RC-106*</b>	2.24	13.70	9.75	9.8
	8.00	<b>RC-108</b>	2.24	17.89	11.75	12.0
	10.13	<b>RC-1010*</b>	2.24	22.65	13.75	14.0
	14.00	<b>RC-1014</b>	2.24	31.31	17.75	18.0
<b>15</b> (15.7)	1.00	<b>RC-151</b>	3.14	3.14	4.88	7.2
	2.00	<b>RC-152</b>	3.14	6.28	5.88	9.0
	4.00	<b>RC-154*</b>	3.14	12.57	7.88	11.0
	6.00	<b>RC-156*</b>	3.14	18.85	10.69	15.0
	8.00	<b>RC-158</b>	3.14	25.13	12.69	18.0
	10.00	<b>RC-1510</b>	3.14	31.42	14.69	21.0
	14.00	<b>RC-1514</b>	3.14	43.98	18.69	26.0
<b>25</b> (25.8)	1.00	<b>RC-251</b>	5.16	5.16	5.50	13.0
	2.00	<b>RC-252*</b>	5.16	10.31	6.50	14.0
	4.00	<b>RC-254*</b>	5.16	20.63	8.50	18.0
	6.25	<b>RC-256*</b>	5.16	32.23	10.75	22.0
	8.25	<b>RC-258</b>	5.16	42.55	12.75	27.0
	10.25	<b>RC-2510</b>	5.16	52.86	14.75	31.0
	12.25	<b>RC-2512</b>	5.16	63.18	16.75	36.0
14.25	<b>RC-2514*</b>	5.16	73.49	18.75	39.0	
<b>30</b> (32.4)	8.25	<b>RC-308</b>	6.49	53.56	15.25	40.0
<b>50</b> (55.2)	2.00	<b>RC-502</b>	11.04	22.09	6.94	33.0
	4.00	<b>RC-504</b>	11.04	44.18	8.94	42.0
	6.25	<b>RC-506*</b>	11.04	69.03	11.13	51.0
	13.25	<b>RC-5013</b>	11.04	146.34	18.13	83.0
<b>75</b> (79.5)	6.13	<b>RC-756</b>	15.90	97.41	11.25	65.0
	13.13	<b>RC-7513</b>	15.90	208.74	19.38	130.0
<b>100</b> (103.1)	6.63	<b>RC-1006</b>	20.63	136.67	14.06	130.0
	10.25	<b>RC-10010</b>	20.63	211.45	17.69	160.0

\* Available as a set. See note on this page.

\*\* RC-50 cylinder has non-removable grooved saddle and no collar thread.

## RC Series



Capacity:

**5-100 tons**

Stroke:

**.63-14.25 inches**

Maximum Operating Pressure:

**10,000 psi**



### Extreme Environment Products

Designed for use in applications where frequent washdowns, cleaning chemicals, water and fluids cause rust and corrosion of painted steel components.

Page: 12



### RAC-Series, Single-Acting Cylinders

The lightweight general purpose spring return aluminum cylinders.

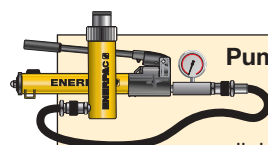
Page: 12



### Gauges

Minimize the risk of overloading and ensure long, dependable service from your equipment. Refer to the System Components section for a full range of gauges.

Page: 122



### Pump and Cylinder Sets

All cylinders marked with an \* are available as sets (cylinder, gauge, couplers, hose and pump) for your ordering convenience.

Page: 58

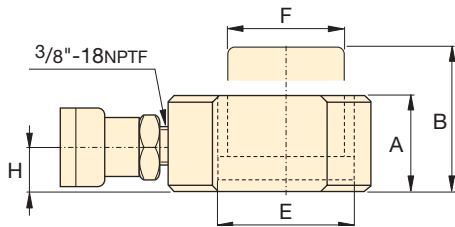
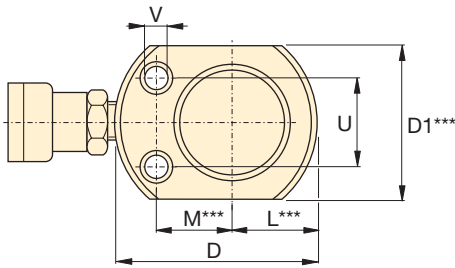
# RC-Series, Single-Acting Cylinders



### Speed Chart

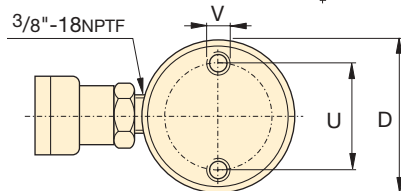
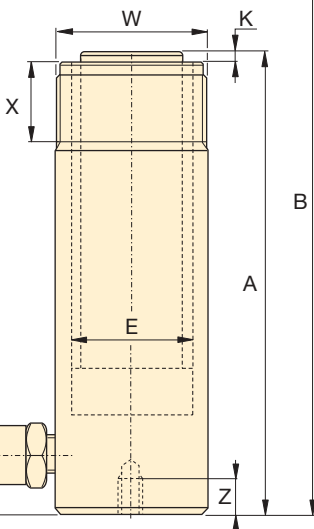
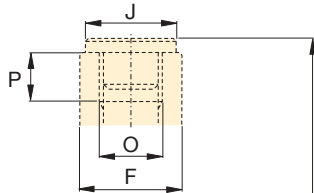
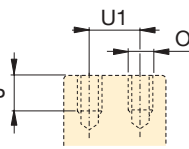
See the Enerpac Cylinder Speed Chart in our "Yellow Pages" to determine your approximate cylinder speed.

Page: 113

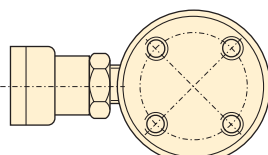


RC-50

RC-101 only  
(U1 = .75 inch)



RC-51 to RC-7513 models



RC-1006 and RC-10010 models

◀ For full features see page 6.

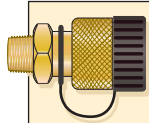
Cylinder Capacity	Stroke	Model Number	Cylinder Effective Area	Oil Capacity	Collapsed Height	Extended Height	Outside Diameter
tons (maximum)	(in)		(in <sup>2</sup> )	(in <sup>3</sup> )	A (in)	B (in)	D (in)
5 (4.9)	.63	RC-50**	.99	.62	1.63	2.25	2.31
	1.00	RC-51	.99	.99	4.34	5.34	1.50
	3.00	RC-53	.99	2.98	6.50	9.50	1.50
	5.00	RC-55*	.99	4.97	8.50	13.50	1.50
	7.00	RC-57	.99	6.96	10.75	17.75	1.50
	9.13	RC-59	.99	9.07	12.75	21.88	1.50
10 (11.2)	1.00	RC-101	2.24	2.24	3.53	4.53	2.25
	2.13	RC-102*	2.24	4.75	4.78	6.91	2.25
	4.13	RC-104	2.24	9.23	6.75	10.88	2.25
	6.13	RC-106*	2.24	13.70	9.75	15.88	2.25
	8.00	RC-108	2.24	17.89	11.75	19.75	2.25
	10.13	RC-1010*	2.24	22.65	13.75	23.88	2.25
	12.00	RC-1012	2.24	26.84	15.75	27.75	2.25
15 (15.7)	1.00	RC-151	3.14	3.14	4.88	5.88	2.75
	2.00	RC-152	3.14	6.28	5.88	7.88	2.75
	4.00	RC-154*	3.14	12.57	7.88	11.88	2.75
	6.00	RC-156*	3.14	18.85	10.69	16.69	2.75
	8.00	RC-158	3.14	25.13	12.69	20.69	2.75
	10.00	RC-1510	3.14	31.42	14.69	24.69	2.75
	12.00	RC-1512	3.14	37.70	16.69	28.69	2.75
25 (25.8)	1.00	RC-251	5.16	5.16	5.50	6.50	3.38
	2.00	RC-252*	5.16	10.31	6.50	8.50	3.38
	4.00	RC-254*	5.16	20.63	8.50	12.50	3.38
	6.25	RC-256*	5.16	32.23	10.75	17.00	3.38
	8.25	RC-258	5.16	42.55	12.75	21.00	3.38
	10.25	RC-2510	5.16	52.86	14.75	25.00	3.38
	12.25	RC-2512	5.16	63.18	16.75	29.00	3.38
	14.25	RC-2514*	5.16	73.49	18.75	33.00	3.38
30 (32.4)	8.25	RC-308	6.49	53.56	15.25	23.50	4.00
50 (55.2)	2.00	RC-502	11.04	22.09	6.94	8.94	5.00
	4.00	RC-504	11.04	44.18	8.94	12.94	5.00
	6.25	RC-506*	11.04	69.03	11.13	17.38	5.00
	13.25	RC-5013	11.04	146.34	18.13	31.38	5.00
75 (79.5)	6.13	RC-756	15.90	97.41	11.25	17.38	5.75
	13.13	RC-7513	15.90	208.74	19.38	32.50	5.75
100 (103.1)	6.63	RC-1006	20.63	136.67	14.06	20.69	7.00
	10.25	RC-10010	20.63	211.45	17.69	27.94	7.00

\* Available as a set. See page 58.

\*\* RC-50 cylinder has non-removable grooved saddle and no collar thread.

\*\*\* D1 = 1.63 inch, L = .81 inch, M = 1.00 inch.

# Single-Acting, General Purpose Cylinders



**Couplers Included!**  
CR-400 couplers included on all models. Fits all HC-Series hoses.

Capacity:  
**5-100 tons**

Stroke:  
**.63-14.25 inches**

Maximum Operating Pressure:  
**10,000 psi**

**RC Series**



Cylinder Bore Diam.	Plunger Diam.	Base to Adv. Port	Saddle Diam.	Saddle Protrusion from Plngr.	Plunger Internal Thread	Plunger Thread Length	Base Mounting Holes			Collar Thread	Collar Thread Length	Weight (lbs)	Model Number
							Bolt Circle U (in)	Thread V (in)	Thrd. Depth Z (in)				
E (in)	F (in)	H (in)	J (in)	K (in)	O (in)	P (in)	U (in)	V (in)	Z (in)	W (in)	X (in)		
1.13	1.00	.75	**	**	**	**	1.13	.22	—	—	—	2.2	RC-50**
1.13	1.00	.75	1.00	.25	3/4"-16	.56	1.00	1/4"-20UN	.56	1 1/2"-16	1.13	2.3	RC-51
1.13	1.00	.75	1.00	.25	3/4"-16	.56	1.00	1/4"-20UN	.56	1 1/2"-16	1.13	3.3	RC-53
1.13	1.00	.75	1.00	.25	3/4"-16	.56	1.00	1/4"-20UN	.56	1 1/2"-16	1.13	4.1	RC-55*
1.13	1.00	.75	1.00	.25	3/4"-16	.63	1.00	1/4"-20UN	.56	1 1/2"-16	1.13	5.3	RC-57
1.13	1.00	.75	1.00	.25	3/4"-16	.63	1.00	1/4"-20UN	.56	1 1/2"-16	1.13	6.1	RC-59
1.69	1.50	.75	—	—	#10-24UN	.25	1.56	5/16"-18UN	.50	2 1/4"-14	1.06	4.0	RC-101
1.69	1.50	.75	1.38	.25	1"-8	.75	1.56	5/16"-18UN	.50	2 1/4"-14	1.13	5.1	RC-102*
1.69	1.50	.75	1.38	.25	1"-8	.75	1.56	5/16"-18UN	.50	2 1/4"-14	1.06	7.2	RC-104
1.69	1.50	.75	1.38	.25	1"-8	.75	1.56	5/16"-18UN	.50	2 1/4"-14	1.13	9.8	RC-106*
1.69	1.50	.75	1.38	.25	1"-8	.75	1.56	5/16"-18UN	.50	2 1/4"-14	1.06	12	RC-108
1.69	1.50	.75	1.38	.25	1"-8	.75	1.56	5/16"-18UN	.50	2 1/4"-14	1.13	14	RC-1010*
1.69	1.50	.75	1.38	.25	1"-8	.75	1.56	5/16"-18UN	.50	2 1/4"-14	1.06	15	RC-1012
1.69	1.50	.75	1.38	.25	1"-8	.75	1.56	5/16"-18UN	.50	2 1/4"-14	1.06	18	RC-1014
2.00	1.63	.75	1.50	.38	1"-8	1.00	1.88	3/8"-16UN	.50	2 3/4"-16	1.19	7.2	RC-151
2.00	1.63	.75	1.50	.38	1"-8	1.00	1.88	3/8"-16UN	.50	2 3/4"-16	1.19	9	RC-152
2.00	1.63	.75	1.50	.38	1"-8	1.00	1.88	3/8"-16UN	.50	2 3/4"-16	1.19	11	RC-154*
2.00	1.63	1.00	1.50	.38	1"-8	1.00	1.88	3/8"-16UN	.50	2 3/4"-16	1.19	15	RC-156*
2.00	1.63	1.00	1.50	.38	1"-8	1.00	1.88	3/8"-16UN	.50	2 3/4"-16	1.19	18	RC-158
2.00	1.63	1.00	1.50	.38	1"-8	1.00	1.88	3/8"-16UN	.50	2 3/4"-16	1.19	21	RC-1510
2.00	1.63	1.00	1.50	.38	1"-8	1.00	1.88	3/8"-16UN	.50	2 3/4"-16	1.19	24	RC-1512
2.00	1.63	1.00	1.50	.38	1"-8	1.00	1.88	3/8"-16UN	.50	2 3/4"-16	1.19	26	RC-1514
2.56	2.25	1.00	2.00	.41	1 1/2"-16	1.00	2.31	1/2"-13UN	.75	3 5/16"-12	1.94	13	RC-251
2.56	2.25	1.00	2.00	.41	1 1/2"-16	1.00	2.31	1/2"-13UN	.75	3 5/16"-12	1.94	14	RC-252*
2.56	2.25	1.00	2.00	.41	1 1/2"-16	1.00	2.31	1/2"-13UN	.75	3 5/16"-12	1.94	18	RC-254*
2.56	2.25	1.00	2.00	.41	1 1/2"-16	1.00	2.31	1/2"-13UN	.75	3 5/16"-12	1.94	22	RC-256*
2.56	2.25	1.00	2.00	.41	1 1/2"-16	1.00	2.31	1/2"-13UN	.75	3 5/16"-12	1.94	27	RC-258
2.56	2.25	1.00	2.00	.41	1 1/2"-16	1.00	2.31	1/2"-13UN	.75	3 5/16"-12	1.94	31	RC-2510
2.56	2.25	1.00	2.00	.41	1 1/2"-16	1.00	2.31	1/2"-13UN	.75	3 5/16"-12	1.94	36	RC-2512
2.56	2.25	1.00	2.00	.41	1 1/2"-16	1.00	2.31	1/2"-13UN	.75	3 5/16"-12	1.94	39	RC-2514*
2.88	2.25	2.25	2.00	.41	1 1/2"-16	1.00	—	—	—	3 5/16"-12	1.94	40	RC-308
3.75	3.13	1.31	2.81	.11	—	—	3.75	1/2"-13UN	.75	5"-12	2.19	33	RC-502
3.75	3.13	1.31	2.81	.11	—	—	3.75	1/2"-13UN	.75	5"-12	2.19	42	RC-504
3.75	3.13	1.38	2.81	.11	—	—	3.75	1/2"-13UN	.75	5"-12	2.19	51	RC-506*
3.75	3.13	1.38	2.81	.11	—	—	3.75	1/2"-13UN	.75	5"-12	2.19	83	RC-5013
4.50	3.75	1.19	2.81	.23	—	—	—	—	—	5 3/4"-12	1.75	65	RC-756
4.50	3.75	1.19	2.81	.23	—	—	—	—	—	5 3/4"-12	1.75	130	RC-7513
5.13	4.13	1.63	2.81	.11	—	—	5.50	3/4"-10UN	1.00	6 7/8"-12	1.75	130	RC-1006
5.13	4.13	1.63	2.81	.11	—	—	5.50	3/4"-10UN	1.00	6 7/8"-12	1.75	160	RC-10010

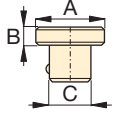
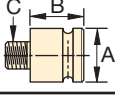
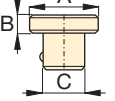


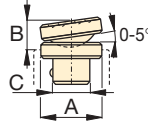
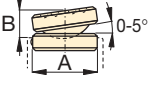
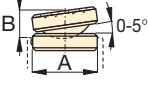
## ▼ SELECTION CHART

For Use with Cylinder Capacity (tons)	Saddles			Base Plate	Mounting Block	Clevis Eyes	
	Flat/Threaded	Grooved <sup>1)</sup>	Tilt			Base <sup>4)</sup>	Plunger
5	A-53F <sup>2)</sup>	A-53G <sup>2)</sup>	—	—	RB-5 <sup>2)</sup> , AW-51 <sup>2)</sup> , AW-53 <sup>2)</sup>	REB-5 <sup>2)</sup>	REP-5 <sup>2)</sup>
10	A-12 <sup>3)</sup> , A-102F <sup>3)</sup>	A-102G <sup>3)</sup>	CAT-10 <sup>3)</sup>	JB-10	RB-10, AW-102	REB-10	REP-10 <sup>3)</sup>
15	—	A-152G	CAT-10	—	RB-15	REB-15	REP-10
25	A-29	A-252G	CAT-50	JB-25	RB-25	REB-25	REP-25
30	A-29	A-252G	CAT-50	—	RB-25	—	REP-25
50	—	—	CAT-100	JB-50	—	—	—
75	—	—	CAT-100	—	—	—	—
100	—	—	CAT-100	—	—	—	—

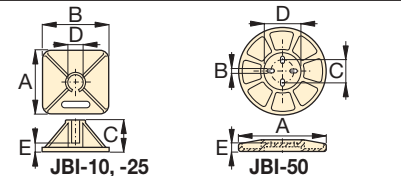
<sup>1)</sup> Standard on 5-30 ton RC-cylinders   <sup>2)</sup> Except RC-50   <sup>3)</sup> Except RC-101   <sup>4)</sup> Mounting screws are included.

## ▼ DIMENSION CHARTS

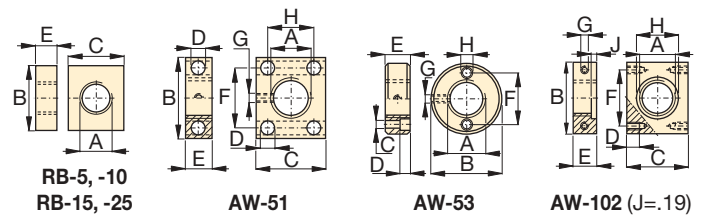
Model Number	Saddle Dimensions (in)			
	A	B	C	
<b>Flat</b>				
A-53F	1.00	.25	.68	
A-102F	1.38	.24	.88	
A-12	2.00	1.88	1"-8UNC	
A-29	2.00	1.88	1 1/2"-16UN	
<b>Grooved</b>				
A-53G	1.00	.25	.68	
A-102G	1.38	.24	.88	
A-152G	1.50	.37	.88	
A-252G	1.97	.37	1.40	

Model Number	Tilt Saddle Dimensions (in)			
	A	B	C	
<b>Tilt</b>				
CAT-10	1.38	.79	.88	
CAT-50	1.97	.83	1.40	
<b>Tilt</b>				
CAT-100	2.80	.98	—	

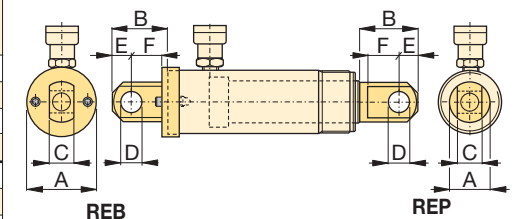
Model Number	Base Plate Dimensions (in)				
	A	B	C	D	E
JB-10	9.00	9.00	5.34	2.29	.81
JB-25	11.00	11.00	5.53	3.41	1.03
JB-50	12.00	.60	3.75	5.19	1.25



Model Number	Mounting Block Dimensions (in)							
	A	B	C	D	E	F	G	H
RB-5	1 1/2"-16	3.50	3.00	—	1.00	—	—	—
AW-51	1 1/2"-16	2.76	2.36	.43	.98	2.13	1/4"-20	1.62
AW-53	1 1/2"-16	2.87	.28	.31	.75	2.25	1/4"-20	.41
RB-10	2 1/4"-14	4.50	3.50	—	1.00	—	—	—
AW-102	2 1/4"-14	3.94	3.25	.63	1.18	3.00	7/16"-20	2.31
RB-15	2 3/4"-16	4.00	4.50	—	1.50	—	—	—
RB-25	3 5/16"-12	5.00	6.50	—	2.00	—	—	—



Type	Model Number	Clevis Eye Dimensions (in)						Pin to Pin* (in)
		A	B	C	D	E	F	
Base <sup>4)</sup>	REB-5	1.75	1.88	.56	.63	.63	1.00	2.37
	REB-10	2.50	2.63	1.00	.88	1.00	1.38	3.07
	REB-15	3.00	2.63	1.00	.88	1.00	1.38	3.07
	REB-25	3.75	3.13	1.50	1.25	1.25	1.63	3.45
Plunger	REP-5	1.13	1.62	.56	.63	.63	.75	—
	REP-10	1.69	2.43	1.00	.88	1.00	1.13	—
	REP-25	2.25	2.93	1.50	1.25	1.25	1.38	—



\* Pin to Pin— REB and REP Clevises fitted. Add cylinder stroke length.  
<sup>4)</sup> Mounting screws are included.