

QUALITY  
DURABILITY  
TRADITION

# HOLEMAKING

There With You<sup>SM</sup>  
faster • safer • easier

“Design and durability.  
They’re what Greenlee  
does best.”

CHRISTIE WARNER  
Electrical Contractor





# Knockout, drive, drill, cut & punch. You'll get through it with Greenlee.

- New 3-4 tooth-design holesaws are 20% faster than ordinary holesaws
- High speed cutters offer lowest cost per hole and last ten times longer than ordinary holesaws for clean, burr-free edges
- Quick Draw® Flex Driver features a fully flexible neck to position the knockout punch in the desired location
- The patented Greenlee 724 Steel Stud Punch is designed to manually punch a square hole in steel studs. Better yet, the patented design rolls the edges over, decreasing the potential of hang-ups in the installation of armored cable and PVC conduit for applications where code does not require a bushing



**Quick Draw® Flex Driver**



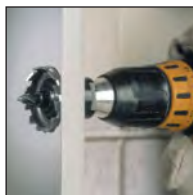
**724 Steel Stud Punch**



## Holemaking Selection Guide

MATERIAL TYPE	MATERIAL THICKNESS	NUMBER OF HOLES	PRODUCTS	APPLICATION CONSIDERATIONS	PAGES
Steel	10GA	Highest	Slugsplitter Punches	Maximum durability and universal material usage Maximum hole size 2-1/2 inches	8-9
	10GA	High	Slugbuster Punches	Maximum hole size 2-1/2 inches	10-23
	10GA	High	Standard Punches	Maximum hole size 5-5/8 inches	11, 24-29
	10GA	High	High Speed Cutters	Maximum hole size 2-1/2 inches	44
	8GA	Medium	Carbide-Tipped Hole Cutters	Maximum hole size 2-1/2 inches	43
	10GA	Medium	Step Bits	Maximum hole size 1-3/8 inches	41
	10GA	Low	Hole Saws	Maximum hole size 6 inches	45-48
Stainless Steel	10GA	Highest	Slugsplitter Punches	Maximum durability and universal material usage Maximum hole size 2-1/2 inches	8-9
	10GA	Medium	Slugbuster Punches	Maximum hole size 2-1/2 inches	10-23
	9GA	Medium	Kwik Change Cutters	Maximum hole size 3 inches, quick change cutting heads	42
	8GA	Medium	Carbide-Tipped Hole Cutters	Maximum hole size 2-1/2 inches	43
	10GA	Low	Hole Saws	Run at 200 RPM, high pressure (150 lbs.)	45-48
Wood	18 inches	High	Naileater Power Bits	Cuts through nails, good chip removal, max hole size 1-1/4 inches	52
	2-2 x 4's	High	E-Z Bore Bits	Self feed screw for hard or soft woods, max hole size 4-5/8 inches	53-54
	2 x 4	High	Step Bits	Maximum hole size 1-3/8 inches, low chip removal	41
	16 inches	Medium	Spade Bits	Maximum hole size 1-1/2 inches	58
	1-5/8" or 2 x 4	Medium	Hole Saws	Best on thinner wood, low chip removal, max hole size 6 inches	45-48
Aluminum	10GA	Highest	Slugsplitter Punches	Maximum durability and universal material usage Maximum hole size 2-1/2 inches	8-9
	10GA	High	Slugbuster Punches	Maximum hole size 2-1/2 inches	10-23
	10GA	High	Standard Punches	Maximum hole size 5-5/8 inches	11, 24-29
	10GA	High	High-Speed Cutters	Maximum hole size 2-1/2 inches	44
	10GA	Medium	Step Bits	Maximum hole size 1-3/8 inches	41
	10GA	Low	Hole Saws	Maximum hole size 6 inches	45-48
Fiberglass/Plastic	approx. 1/8"	Highest	Slugsplitter Punches	Maximum durability and universal material usage Maximum hole size 2-1/2 inches	8-9
	approx. 1/8"	High	Slugbuster Punches	Maximum hole size 2-1/2 inches	10-23
	approx. 1/8"	High	Standard Punches	Maximum hole size 5-5/8 inches	11, 24-29
	approx. 1/8"	High	High-Speed Cutters	Maximum hole size 2-1/2 inches	44
	approx. 1/8"	Medium	Step Bits	Maximum hole size 1-3/8 inches	41
	1-5/8"	Low	Hole Saws	Maximum hole size 6 inches	45-48
Drywall/Ceiling Tile	7/8"	High	Recessed light hole saws	Replaceable blades	59
	7/8"	Medium	Quick Cutter	Adjustable or fixed, sprinkler heads or lighting	59
	7/8"	Medium	Keyhole Saw	Non-round holes	59
Quazite®* Enclosures		High	Slugbuster Punches		10-23
	approx. 1/8"	Medium	Carbide-Grit Hole Saws		46
Hardyboard siding		Medium	Carbide-Grit Hole Saws		46
Cement board		Medium	Carbide-Grit Hole Saws		46
Existing Wall			D'versibits	Remodeling, phone, cable, alarm installation	55-57
Non-round hole		High	Non-round Punches	Square, rectangular, electronic connector holes	33-35
		Medium	Reciprocating Blades		49
		Medium	Jigsaw Blades		50
Non-conduit sizes	16-10GA	High	Standard Punches		11
Metal Studs	20GA		Stud Punches		39-40

\*Quazite is a registered trademark of Strongwell Corporation



## Knockout Punch and Driver Selection Guide

### Knockout Punch

PUNCH TYPE	DRIVE METHOD	CAPACITY	SIZE RANGE AVAILABLE	PAGES
Slug-Splitter®	Ratchet, Hydraulic or Battery	Up thru 10 gauge (3.5 mm) stainless steel or mild steel	.598" through 2.526" dia. (15.2 mm through 64 mm)	8
Slug-Buster®	Manual, Ratchet, Hydraulic or Battery	Up thru 10 gauge (3.5 mm) mild steel	.492" through 2.52" dia. (12.5 mm through 64.0 mm)	10
Standard Round	Manual, Ratchet, Hydraulic or Battery	Up thru 10 gauge (3.5 mm) mild steel and aluminum	1/2" through 5-5/8" dia. (12.7 through 143.7 mm)	11, 25

### Knockout Punch Driver

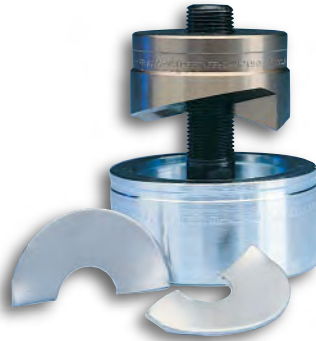
DRIVER TYPE	DESCRIPTION	KITS	PAGES
Battery-Powered or Corded Hydraulic Driver	<ul style="list-style-type: none"> <li>Develops 6.7 tons of hydraulic force.</li> <li>Available with three choice of battery chargers – 115, 230 or 12 volt.</li> <li>Punches up through 10 gauge (3.5 mm) mild steel with Greenlee standard and Slug-Buster® knockout punches and 12 gauge (2.5 mm) stainless steel with Greenlee Slug-Splitter® knockout punches.</li> </ul>	Available in kits with driver only or with driver and Slug-Buster® or Slug-Splitter® knockout punches.	15
Hand Pump Hydraulic Driver with Ram	<ul style="list-style-type: none"> <li>Powerful hydraulic ram develops 11 tons of hydraulic force.</li> <li>Punches up thru 10 gauge (3.5 mm) mild steel with Greenlee standard and Slug-Buster® knockout punches and 10 gauge (3.5 mm) stainless steel with Greenlee Slug-Splitter® knockout punches.</li> </ul>	Available in kits with driver only or with driver and either standard, Slug-Buster® or Slug-Splitter® knockout punches.	19
Foot Pump Hydraulic Driver with Ram	<ul style="list-style-type: none"> <li>Foot operation frees both hands to operate punch.</li> <li>Powerful hydraulic ram develops 11 tons of hydraulic force.</li> <li>Punches up through 10 gauge (3.5 mm) mild steel with Greenlee Standard and Slug-Buster® knockout punches; and 10 gauge (3.5 mm) stainless steel with Greenlee Slug-Splitter® knockout punches.</li> </ul>	Available in kits with driver only or with driver and either standard, Slug-Buster® or Slug-Splitter® knockout punches.	17
Quick Draw™ Flex Hydraulic Driver	<ul style="list-style-type: none"> <li>Allows unlimited driver orientation to simplify access to work area</li> <li>Develops 8 tons of hydraulic force for easy punching.</li> <li>Punches up through 10 gauge (3.5 mm) mild steel with Greenlee Standard and Slug-Buster® knockout punches; and 10 gauge (3.5 mm) stainless steel with Greenlee Slug-Splitter® knockout punches.</li> </ul>		21
Quick Draw 90™ Hydraulic Driver	<ul style="list-style-type: none"> <li>Right angle driver head rotates over 180 degrees for maximum flexibility in tight working areas.</li> <li>Develops 8 tons of hydraulic force for easy punching.</li> <li>Punches up through 10 gauge (3.5 mm) mild steel with Greenlee Standard and Slug-Buster® knockout punches; and 10 gauge (3.5 mm) stainless steel with Greenlee Slug-Splitter® knockout punches.</li> </ul>	Available in kits with driver only or with driver and Slug-Buster® knockout punches.	21
Quick Draw™ Hydraulic Driver	<ul style="list-style-type: none"> <li>Perfect for fast, straight-on front panel punching.</li> <li>Develops 8 tons of hydraulic force for easy punching.</li> <li>Punches up through 10 gauge (3.5 mm) mild steel with Greenlee Standard and Slug-Buster® knockout punches; and 10 gauge (3.5 mm) stainless steel with Greenlee Slug-Splitter® knockout punches.</li> </ul>	Available in kits with driver only or with driver and Slug-Buster® knockout punches.	21
High Leverage Ratchet Driver	<ul style="list-style-type: none"> <li>Time saving ball bearing head punches faster than wrench method.</li> <li>Punches up through 10 gauge (3.5 mm) mild steel with Greenlee Standard Slug-Buster® knockout punches; and 16 gauge (1.5 mm) stainless steel with Greenlee Slug-Splitter® knockout punches.</li> </ul>	Available in kits with driver only or with driver and Slug-Buster® knockout punches.	23

## Standard Round Punch to Slugbuster Punch Cross Reference

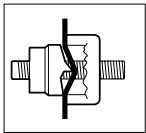
STANDARD		DESCRIPTION	SLUGBUSTER		SIZE DIFFERENCE (SLUGBUSTER TO STANDARD)
CAT. NO.	UPC NO.		CAT. NO.	UPC NO.	
121AV	04006	1/2" STANDARD PUNCH	721-1/2	31756	
123AV	04008	3/4" STANDARD PUNCH	721-3/4	31757	
125AV	04010	1" STANDARD PUNCH	721-1	31758	
127AV	06974	1-1/4" STANDARD PUNCH	721-1-1/4	31759	
1756AV	04232	PUNCH 2.00 (50.8)	35160	35160	
17687	17687	PUNCH 1.85 (47.0)	721E-47	32009	
17690	17690	PUNCH 2.36 (60.0)	721E-60	32011	
17697	17697	PUNCH 0.80 (20.4)	721E-20.4	31971	
17700	17700	PUNCH 0.73 (18.6)	721E-18.6	31970	
1783AV	04245	PUNCH 2.12 (54.0)	36172	36172	
18331	18331	PUNCH 1.45 (37.0)	721E-37.0	31975	
21115	21115	PUNCH UNIT PG 9 (15.2)	7211EBB-15.2	31989	
21316	21316	PUNCH 0.59 (15.2)	721E-15.2	31969	
24459	24459	PUNCH 1.28 (32.5)	35169	35169	
24462	24462	PUNCH 1.59 (40.5)	35158	35158	
24476	24476	PUNCH UNIT 1.28 (32.5)	35179	35179	
24477	24477	PUNCH UNIT 1.59 (40.5)	35180	35180	
35192	35192	PUNCH UNIT 0.63 (16.2)	35177	35177	
36282	36282	1-7/32" STANDARD PUNCH	60237	60237	
36505	36505	PUNCH UNIT 1.21 (30.5)	60246	60246	
36506	36506	1-7/32" STANDARD PUNCH UNIT	60246	60246	
36686	36686	PUNCH SET PG 9 (30.5)	36690	36690	
36687	36687	PUNCH SET PG9 (48)	36691	36691	
36688	36688	PUNCH SET ISO 16-40	36692	36692	
36689	36689	PUNCH SET ISO 16-64	36693	36693	
36882	36882	PUNCH 1.11 (28.3)	721E-28.3	31973	
36910	36910	PUNCH UNIT 1.11 (28.3)	7211EBB-28.3	31993	
439AV	06978	1-1/2" STANDARD PUNCH	721-1-1/2	31760	
441AV	04062	2" STANDARD PUNCH	721-2	31761	
71BB	22563	1/2" STANDARD PUNCH UNIT	7211BB-1/2	31962	
72BB	22564	3/4" STANDARD PUNCH UNIT	7211BB-3/4	31963	
73BB	22565	1" STANDARD PUNCH UNIT	7211BB-1	31964	
730-1/2	02408	PUNCH UNIT 0.50 (12.7)	06727	06727	12.5 mm vs.12.7 mm
730-5/8	02409	PUNCH UNIT 0.62 (15.9)	35177	35177	16.2 mm vs.15.9 mm
730-9/16	02433	PUNCH UNIT 0.56 (14.3)	7211EBB-15.2	31989	15.2 mm vs.14.3 mm
730BB-1	20670	PUNCH UNIT 1.00 (25.4)	35178	35178	
730BB-11/16	25340	PUNCH UNIT 0.68 (17.5)	7211EBB-18.6	31990	18.6 mm vs.17.5 mm
730BB-1-1/4	20673	PUNCH UNIT 1.25 (31.8)	35179	35179	32.5 mm vs.31.8 mm
730BB-1-1/8	20671	PUNCH UNIT 1.12 (28.6)	7211EBB-28.3	31993	28.3 mm vs.28.6 mm
730BB-13/16	20668	PUNCH UNIT 0.81 (20.6)	7211EBB-20.4	31991	20.4 mm vs.20.6 mm
730BB-1-3/8	25427	PUNCH UNIT 1.37 (34.9)	7211BB-1	31964	34.6 mm vs.34.9 mm
730BB-2	20676	PUNCH UNIT 2.00 (50.8)	35181	35181	
730BB-2-1/2	20679	PUNCH UNIT 2.50 (63.5)	35182	35182	64 mm vs.63.5 mm
730BB-2-1/8	20678	PUNCH UNIT 2.12 (54.0)	36171	36171	
730EBB-18.6	18886	PUNCH UNIT 0.73 (18.6)	7211EBB-18.6	31990	
730EBB-20.4	18887	PUNCH UNIT 0.80 (20.4)	7211EBB-20.4	31991	
730EBB-37.0	18890	PUNCH UNIT 1.45 (37.0)	7211EBB-37	31995	
730EBB-47.0	18891	PUNCH UNIT 1.85 (47.0)	7211EBB-47	31996	
730EBB-60.0	18892	PUNCH UNIT 2.36 (60.0)	7211EBB-60	31998	
7306	15909	HYDRAULIC PUNCH SET	7306SB	34360	
7309E	32804	PUNCH SET	36691	36691	
7310	15910	HYDRAULIC PUNCH SET	7310SB	34361	
735BB	19973	1/2" to 1-1/4" STANDARD KNOCKOUT KIT	7235BB	32013	
737BB	19974	1-1/2" - 2" STANDARD KNOCKOUT KIT	7237BB	32014	
74BB	22566	1-1/4" STANDARD PUNCH UNIT	7211BB-1-1/4	31965	
75BB	22567	1-1/2" STANDARD PUNCH UNIT	7211BB-1-1/2	31966	
76BB	22568	2" STANDARD PUNCH UNIT	7211BB-2	31967	
87AV	03986	PUNCH 1.00 (25.4)	35165	35165	

## Slug-Splitter® Knockout Punches 0.598" to 2.520"

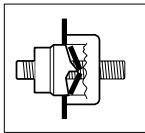
### Designed for stainless steel applications



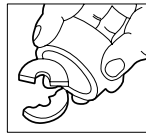
- Slug-Splitter® heavy-duty punches are designed to punch up through 10 gauge (3.5 mm) stainless steel.
- Unique slug splitting design and tool steel construction easily punch 10 gauge (3.5 mm) mild steel and stainless steel.
- Heavy-duty dies and stainless steel draw studs for longer life.
- Excellent abrasion resistance for punching fiberglass and plastic.
- Slug-Splitter® Punch Units consist of: punch, die and draw stud. Check individual punch for specific capacity.
- U.S. Patent No. 4,543,722.



Unique Slug-Splitter® punch design creases slug as the punch is drawn into the die.



Slug is split in half as punching operation is completed.



Split slugs fall free from the die and stud.

#### SPECIFICATIONS

**Capacity** Stainless steel up through 10 gauge (3.5 mm).

**Application** 10 gauge stainless steel, mild steel, fiberglass and plastic enclosures.

#### Hole Sizes

Conduit Sizes – Hole size is outside diameter of US conduit sizes.

Example: 1/2" conduit size punch actually makes a 7/8" hole.

Pg Sizes – European standard pipe sizes

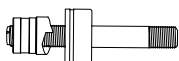
ISO Sizes – International Standards Organization pipe sizes.

**Operation** Operate with battery, hydraulic or high leverage ratchet driver only.

PUNCH CAT./UPC NO.	DIE CAT./UPC NO.	CONDUIT & PIPE	HOLE SIZE					CAPACITY		DRAW STUDS		
			ACTUAL		PG	ISO	STAINLESS STEEL		HYDRAULIC DRIVERS		RATCHET DRIVER*	
			Ø (INCH)	Ø (mm)			GA.	(mm)	7804/7904	7646/7625		
31117	31126	—	—	.598	15.2	9	—	12	2.5	29451	29451	30227
31119	31128	—	—	.732	18.6	11	—	12	2.5	29451	29451	30227
31120	31129	—	—	.803	20.4	13	20	12	2.5	29451	29451	30227
28154	28155	1/2"	7/8	.885	22.5	16	—	10	3.5	29451	29451	30227
28156	28157	3/4"	—	1.115	28.3	21	—	10	3.5	31872	29452	12098
36490	36489	—	1-7/32	1.210	30.5	—	—	10	3.5	31872	29452	12098
28158	28159	1"	1-11/32	1.362	34.6	—	—	10	3.5	31872	29452	12098
31122	31135	—	—	1.457	37.0	29	—	10	3.5	31872	29452	12098
28160	28161	1-1/4"	1-11/16	1.701	43.2	—	—	10	3.5	31872	29452	12098
31123	31131	—	—	1.850	47.0	36	—	10	3.5	—	29452	12098
28162	28163	1-1/2"	1-15/16	1.951	49.6	—	—	10	3.5	—	29452	12098
31124	31132	—	—	2.125	54.0	42	—	10	3.5	—	29452	12098
31125	31133	—	—	2.362	60.0	48	—	10	3.5	—	29452	12098
28165	28166	2"	2-3/8	2.416	61.5	—	—	10	3.5	—	29452	12098
04599	04598	—	—	0.638	16.2	—	16	12	2.5	29451	29451	30227
04602	04601	—	1	1.000	25.4	—	25	10	3.5	31872	29452	12098
04605	04603	—	—	1.280	32.5	—	32	10	3.5	31872	29452	12098
04608	04607	—	—	1.595	40.5	—	40	10	3.5	31872	29452	12098
04611	04609	—	2	2.000	50.8	—	50	10	3.5	—	29452	12098
04614	04613	—	—	2.520	64.0	—	63	10	3.5	—	29452	12098

\* 16 ga. stainless steel capacity with ratchet driver.

#### PUNCH UNIT



PUNCH UNIT – INCLUDES PUNCH, DIE & DRAW		HOLE SIZE				CAPACITY		WEIGHT		DRIVER				DRAW STUD
CAT. NO.	UPC NO.	CONDUIT & PIPE SIZE	ACTUAL		STAINLESS STEEL		LBS.	kg	1904		LS60*/ CLC60			
			Ø INCH	Ø mm	GA	mm			7804/7904	7646/7625				
745R-1/2	30384	1/2"	7/8	.885	22.5	16	1.5	.6	.27	x				30227
745H-1/2	29560	1/2"	7/8	.885	22.5	10	3.5	.7	.32		x	x	x	29451
740H-1-7/32 Oil Tight	29563	—	1-7/32	1.210	30.5	10	3.5	1.2	.54		x	x	x	29452

\* Battery-Powered or Corded Knockout Punch Driver



# Slug-Splitter® Ram and Hand Pump Hydraulic Driver Punch Kit

## Designed for stainless steel applications

### All Kits Feature

- Slug-Splitter® Knockout Punches with capacities up through 10 gauge (3.5 mm) stainless steel. Refer to individual punch capacity ratings.

### 7506 Kit Features

- Fast, easy and simple to operate.
- Compact design makes this a perfect choice for use on construction sites and maintenance jobs.
- Will also drive 751 Cable Cutter head.
- Powerful 11-ton hydraulic ram.
- 3-foot hose.

7506 Punch Kit


 7307 Punch Kit  
(driver not included)

 744 Punch Kit  
(driver not included)


CAT. NO.	UPC NO.	DESCRIPTION	WEIGHT	
			LBS.	kg.
744	29619	1/2" through 1-1/4" Conduit Size Slug-Splitter® Knockout Punch Kit	5	2.3
7307	29528	1/2" through 2" Conduit Size Slug-Splitter® Knockout Punch Kit	10.4	4.7
7506	30385	1/2" through 2" Conduit Size Slug-Splitter® Knockout Punch Kit with Hydraulic Ram and Hand Pump	32	14.5

### SPECIFICATIONS

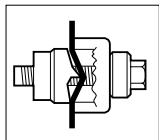
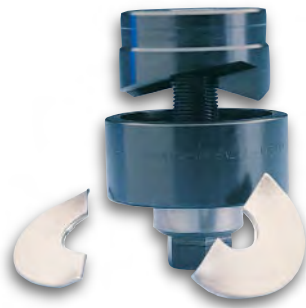
#### Operation

744/29619 – Quick Draw®, Quick Draw 90° and Quick Draw® Flex hydraulic drivers, Battery-Powered drivers, 7646 and 7625 ram-type drivers.  
 7307/29528 – Quick Draw®, Quick Draw 90° and Quick Draw® Flex hydraulic drivers, Battery-Powered drivers, 7646 and 7625 ram-type drivers.  
 7506/30385 – Hydraulic ram and hand pump included.

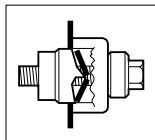
NOTE: See Slug-Splitter® Knockout Punch Units on page 8 for list of individual punches, dies and draw studs.

CAT. NO.	UPC NO.	DESCRIPTION	CONDUIT & PIPE SIZE	HOLE SIZE		CAPACITY		KIT CAT./UPC NO.			
				ACTUAL		STAINLESS STEEL		744/	7307/	7506/	
				Ø INCH	Ø mm	GA	mm	29619	29528	30385	
28154	28154	1/2" Conduit Size Punch	1/2"	7/8	.885	22.5	10	3.5	✓	✓	✓
28155	28155	1/2" Conduit Size Die	1/2"	7/8	.885	22.5	10	3.5	✓	✓	✓
28156	28156	3/4" Conduit Size Punch	3/4"	—	1.115	28.3	10	3.5	✓	✓	✓
28157	28157	3/4" Conduit Size Die	3/4"	—	1.115	28.3	10	3.5	✓	✓	✓
36490	36490	1-7/32" Punch Oiltight	—	1-7/32	1.210	30.5	10	3.5		✓	
36489	36489	1-7/32" Die Oiltight	—	1-7/32	1.210	30.5	10	3.5		✓	
28158	28158	1" Conduit Size Punch	1"	1-11/32	1.362	34.6	10	3.5	✓	✓	✓
28159	28159	1" Conduit Size Die	1"	1-11/32	1.362	34.6	10	3.5	✓	✓	✓
28160	28160	1-1/4" Conduit Size Punch	1-1/4"	1-11/16	1.701	43.2	10	3.5	✓	✓	✓
28161	28161	1-1/4" Conduit Size Die	1-1/4"	1-11/16	1.701	43.2	10	3.5	✓	✓	✓
28162	28162	1-1/2" Conduit Size Punch	1-1/2"	1-15/16	1.951	49.6	10	3.5		✓	✓
28163	28163	1-1/2" Conduit Size Die	1-1/2"	1-15/16	1.951	49.6	10	3.5		✓	✓
28165	28165	2" Conduit Size Punch	2"	2-3/8	2.416	61.5	10	3.5		✓	✓
28166	28166	2" Conduit Size Die	2"	2-3/8	2.416	61.5	10	3.5		✓	✓
29451	29451	7/16" x 4-1/4" Draw Stud							✓	✓	✓
29452	29452	3/4" x 5-1/2" Draw Stud								✓	✓
29529	29529	Metal Case								✓	
19193	19193	Metal Case							✓		
31068	31068	Metal Case									✓
746SS	30387	Ram (includes 1 each of the following 3 items)									✓
29452	29452	– 3/4" x 5-1/2" Draw Stud									✓
54167	54167	– 1/4" Female Coupler									✓
54168	54168	– Dust Plug									✓
15908	15908	Spacer Group (includes 1 each of the following 3 items)									✓
1924AA	03248	– Spacer-Short									✓
1925AA	03249	– Spacer-Medium									✓
1926AA	06904	– Spacer-Long									✓
767	13284	Hydraulic Hand Pump									✓
38316	38316	High Pressure Hose Unit—1/4" x 3' (includes 1 each of the following 3 items)									✓
54169	54169	– 1/4" Male Coupler									✓
54170	54170	– Dust Cap									✓
06302	06302	– High Pressure Hose—1/4" x 3'									✓

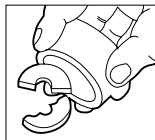
# Slug-Buster® Knockout Punches 0.492" to 2.520"



Unique Slug Buster® punch design creates slug as the punch is drawn into the die.



Slug is split in half as punching operation is completed.



Split slugs fall free from the die and stud.

- The contractor's choice – worldwide.
- Unique punch profile splits slugs allowing easy slug removal.
- Use with battery-powered, hydraulic, ratchet or manual drivers.
- Uses standard Greenlee dies and draw studs.
- Slug Buster Punches available in sizes up thru 2.52" (64.0 mm).
- U.S. Patent #4,543,722.
- Standard round punches available up to 5 5/8" (144.1 mm).

## SPECIFICATIONS

**Capacity** Mild steel up through 10 gauge (3.5 mm).

**Application** Punch mild steel, aluminum, fiberglass and plastic.

### Hole Sizes

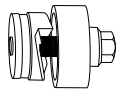
Conduit Sizes – Hole size is outside diameter of US conduit sizes. Example: 1/2" conduit size punch actually makes a 7/8" hole.

Pg Sizes – European standard pipe sizes.

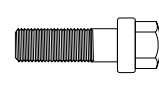
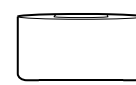
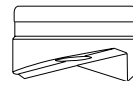
ISO Sizes – International Standards Organization pipe sizes.

**Operation** Battery, hydraulic, ratchet or manual drivers. When used with ratchet, hydraulic or battery drivers, buy the punch and die only; the draw stud is part of the driver kit.

### PUNCH UNIT



### REPLACEMENT PARTS

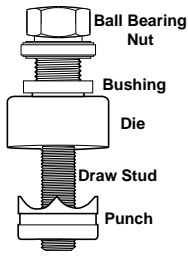


PUNCH UNIT INCLUDES		HOLE SIZE					CAPACITY				WEIGHT		REPLACEMENT PUNCH		REPLACEMENT DIE		REPLACEMENT MANUAL DRAW STUD	
PUNCH, DIE AND DRAW STUD	CONDUIT & PIPE SIZE	ACTUAL			PG	ISO	GA.	mm	LBS.	g	CAT. NO.	UPC NO.	CAT. NO.	UPC NO.	CAT. NO.	UPC NO.		
CAT. NO.	UPC NO.	Ø INCH	Ø mm	MILD STEEL														
06727	06727	—	—	0.492	12.5	7	12	16	1.5	0.3	137	06728	06728	06729	06729	1675AV	04218	
7211EBB-15.2	31989	—	—	0.598	15.2	9	—	14	2.0	0.3	137	31969	31969	32002	32002	00042	00042	
35177	35177	—	—	0.638	16.2	—	16	14	2.0	0.3	137	35163	35163	35162	35162	00042	00042	
7211EBB-18.6	31990	—	—	0.732	18.6	11	—	14	2.0	0.3	137	31970	31970	32003	32003	00042	00042	
7211EBB-20.4	31991	—	—	0.803	20.4	13	20	14	2.0	0.3	137	31971	31971	32004	32004	00042	00042	
7211BB-1/2	31962	1/2"	7/8	0.885	22.5	16	—	10	3.5	0.3	137	721-1/2	31756	14722	14722	00042	00042	
◇	◇	1/2"	7/8	0.885	22.5	16	—	10	3.5	—	—	721-1/2P◇	01980	14722P◇	01992	00042P	06678	
35178	35178	—	1	1.000	25.4	—	25	14	2.0	0.5	227	35165	35165	35164	35164	249AVBB	04040	
7211BB-3/4	31963	3/4"	—	1.115	28.3	—	—	10	3.5	0.8	363	721-3/4	31757	124AV	06972	249AVBB	04040	
◇	◇	3/4"	—	1.115	28.3	—	—	10	3.5	—	—	721-3/4P◇	01981	124AVP◇	01993	249AVBBP◇	01987	
7211EBB-28.3	31993	—	—	1.115	28.3	21	—	14	2.0	0.5	227	31973	31973	32006	32006	00042	00042	
60246	60246	—	1-7/32	1.210	30.5	—	—	10	3.5	0.6	273	60237	60237	36278	36278	249AVBB	04040	
36508	36508	—	1-7/32	1.210	30.5	—	—	14	2.0	0.6	273	36284	36284	36279	36279	00042	00042	
35179	35179	—	—	1.280	32.5	—	32	10	3.5	0.8	363	35169	35169	35168	35168	249AVBB	04040	
7211BB-1	31964	1"	—	1.362	34.6	—	—	10	3.5	1	454	721-1◇	31758	126AV	04011	249AVBB	04040	
◇	◇	1"	—	1.362	34.6	10	—	10	3.5	—	—	721-1P◇	01982	126AVP◇	01994	249AVBBP◇	01987	
7211EBB-37	31995	—	—	1.457	37.0	29	—	10	3.5	1.2	545	31975	31975	32008	32008	249AVBB	04040	
35180	35180	—	—	1.595	40.5	—	40	10	3.5	1.2	545	35158	35158	35159	35159	249AVBB	04040	
7211BB-1-1/4	31965	1-1/4"	—	1.701	43.2	—	—	10	3.5	1.3	590	721-1-1/4◇	31759	128AV	04013	249AVBB	04040	
◇	◇	1-1/4"	—	1.701	43.2	—	—	10	3.5	—	—	721-1/4P◇	01983	128AVP◇	01995	249AVBBP◇	01987	
7211EBB-47	31996	—	—	1.850	47.0	36	—	10	3.5	1.9	862	31976	31976	32009	32009	304AVBB	04042	
7211BB-1-1/2	31966	1-1/2"	—	1.951	49.6	—	—	10	3.5	2.1	953	721-1-1/2	31760	440AV	04061	304AVBB	04042	
◇	◇	1-1/2"	—	1.951	49.6	—	—	10	3.5	—	—	721-1-1/2P◇	01984	440AVP◇	01996	304AVBBP◇	01988	
35181	35181	—	2	2.000	50.8	—	50	10	3.5	2.3	1043	35160	35160	35161	35161	304AVBB	04042	
36171	36171	—	2-1/8	2.125	54.0	42	—	10	3.5	2.5	1134	36172	36172	36173	36173	304AVBB	04042	
7211EBB-60	31998	—	—	2.362	60.0	48	—	10	3.5	2.8	1270	31978	31978	32011	32011	304AVBB	04042	
7211BB-2	31967	2"	2-3/8	2.416	61.5	—	—	10	3.5	3.2	1452	721-2	31761	442AV	04063	304AVBB	04042	
◇	◇	2"	2-3/8	2.416	61.5	—	—	10	3.5	—	—	721-2P◇	01985	442AVP◇	01997	304AVBBP◇	01988	
35182	35182	—	—	2.520	64.0	—	63	10	3.5	3.4	1542	35167	35167	35166	35166	304AVBB	04042	

◇ Individually Packaged in Point of Purchase clamshell for display opportunities



## Standard Round Knockout Punches 0.5" to 5.675"

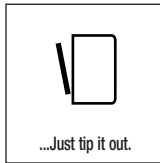
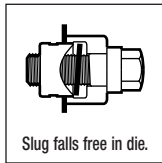
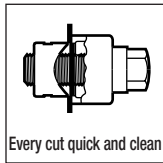


- Round Standard Metal Punch Units are complete units consisting of punch, die and draw stud.
- Use with battery-powered, hydraulic, ratchet or manual drivers.
- Properly assembled through pilot holes, they will make clean, fast and accurate holes.

See page 25 for other sizes of standard round punches

### SPECIFICATIONS

<b>Capacity</b>	Mild steel up through 10 gauge (3.5 mm).
<b>Application</b>	Punch mild steel, aluminum, fiberglass and plastic.
<b>Hole Sizes</b>	<p>Conduit Sizes – Hole size is outside diameter of US conduit sizes. Example: 1/2" conduit size punch actually makes a 7/8" hole.</p> <p>Pg Sizes – European standard pipe sizes.</p> <p>ISO Sizes – International Standards Organization pipe sizes.</p>
<b>Operation</b>	Operate with battery-powered, hydraulic, ratchet or manual drivers. When used with battery-powered, hydraulic, or ratchet drivers buy the punch and die only; the draw stud is part of the driver kit.



### PUNCH UNIT

### REPLACEMENT PARTS

PUNCH KIT-INCLUDES		HOLE SIZE		CAPACITY		WEIGHT		REPLACEMENT PUNCH		REPLACEMENT DIE		REPLACEMENT DRAW STUD		REPLACEMENT BALL BEARING NUT					
CAT. NO.	UPC NO.	CONDUIT & PIPE SIZE	ACTUAL Ø INCH	Ø mm	PG	ISO	MILD STEEL GA.	mm	LBS.	g	CAT. NO.	UPC NO.	CAT. NO.	UPC NO.	CAT. NO.	UPC NO.			
730-1/2	02408	—	1/2	0.500	12.7	7	—	16	1.5	.1	46	1760AV	06996	1759AV	04235	1675AV	04218		
730-9/16	02433	—	9/16	0.563	14.3	—	—	16	1.5	.1	46	1754AV	04230	1753AV	04229	1675AV	04218		
21115	21115	—	—	0.598	15.2	9	—	14	2.0	.3	137	21316	21316	32002	32002	00042	00042		
730-5/8	02409	—	5/8	0.625	15.9	—	—	16	1.5	.2	91	1742AV	04223	1743AV	04224	1675AV	04218		
35192	35192	—	—	0.638	16.2	—	16	14	2.0	.3	137	35193	35193	35162	35162	00042	00042		
730BB-11/16	25340	—	11/16	0.688	17.5	—	—	14	2.0	.3	137	1752AV	04228	1751AV	04227	00042	00042		
730EBB-18.6	18886	—	—	0.732	18.6	11	—	14	2.0	.3	137	17700	17700	32003	32003	00042	00042		
730BB-3/4	20667	—	3/4	0.750	19.1	—	—	14	2.0	.3	137	113AV	03998	114AV	03999	00042	00042		
730EBB - 20.4	18887	—	—	0.803	20.4	13	20	14	2.0	.3	137	17697	17697	32004	32004	00042	00042		
730BB-13/16	20668	—	13/16	0.812	20.6	—	—	14	2.0	.3	137	1745AV	04226	1744AV	04225	00042	00042		
730BB-15/16	25341	—	15/16	0.937	23.8	—	—	14	2.0	.5	227	1762AV	04238	1761AV	04237	00042	00042		
730BB-1	20670	—	1	1.000	25.4	—	25	14	2.0	.5	227	87AV	03986	35164	35164	00042	00042		
730BB-1-1/16	25342	—	1-1/16	1.063	27.0	—	—	14	2.0	.5	227	1763AV	04240	1764AV	04242	00042	00042		
730BB-1-1/8	20671	—	1-1/8	1.125	28.6	—	—	14	2.0	.6	273	91AV	03990	92AV	03991	00042	00042		
36506	36506	—	1-7/32	1.210	30.5	—	—	16	1.5	.6	273	36282	36282	36279	36279	00042	00042		
730BB-1-1/4	20673	—	1-1/4	1.250	31.8	—	—	16	1.5	.7	318	117AV	04002	118AV	04003	00042	00042		
730BB-1-5/16	25344	—	1-5/16	1.313	33.4	—	—	16	1.5	.7	318	1747AV	06587	1746AV	06586	00042	00042		
730BB-1-3/8	25427	—	1-3/8	1.375	34.9	—	—	10	3.5	1.1	499	3205AV	04734	3206AV	04735	249AVBB	04040		
730BB-1-1/2	25428	—	1-1/2	1.500	38.1	—	—	10	3.5	1.2	545	3207AV	04736	3208AV	07044	249AVBB	04040		
730BB-1-5/8	25349	—	1-5/8	1.625	41.3	—	—	10	3.5	1.4	636	1794AV	04251	1793AV	04250	249AVBB	04040		
730BB-1-3/4	25350	—	1-3/4	1.750	44.5	—	—	10	3.5	1.5	681	1816AV	04257	1815AV	04256	249AVBB	04040		
730BB-1-7/8	25351	—	1-7/8	1.875	47.6	—	—	10	3.5	1.9	862	1791AV	04248	1792AV	04249	304AVBB	04042		
730BB-2-1/4	25360	—	2-1/4	2.250	57.2	—	—	10	3.5	2.6	1180	437AV	04058	438AV	04059	304AVBB	04042		
730BB-2-1/2	20679	—	2-1/2	2.500	63.5	—	63	10	3.5	3	1361	1758AV	04234	1757AV	04233	304AVBB	04042		
730PBB-2-5/8	21214	—	2-5/8	2.625	66.7	—	—	10	3.5	5.1	2314	1795AV	04252	1796AV	06997	1434AV	04188	1433AVBB	04187
730BB-2-3/4	25361	—	2-3/4	2.750	69.9	—	—	10	3.5	4.8	2178	1790AV	04247	1789AV	04246	1434AV	04188	1433AVBB	04187
730MBB	25383	—	—	2.781	70.6	—	—	10	3.5	3.8	1724	730101A	02445	730100A	02443	304AVBB	04042	—	—
738BB	19975	2-1/2"	2-7/8	2.914	74.0	—	—	10	3.5	5	2268	1429AV	04175	1430AV	04177	1434AV	04188	1433AVBB	04187
730BB-3	25372	—	3	3.000	76.2	—	—	10	3.5	6.1	2767	1821AV	04259	1820AV	04258	1434AV	04188	1433AVBB	04187
730TBB	25403	—	3-1/8	3.125	79.4	—	—	10	3.5	6	2722	1798AV	06363	1797AV	06362	1434AV	04188	1433AVBB	04187
730EBB-82	18635	—	—	3.228	82.0	—	—	10	3.5	6.3	2858	18905	18905	18906	18906	1434AV	04188	1433AVBB	04187
739BB	19976	3"	3-1/2	3.539	89.9	—	—	10	3.5	5.9	2677	1431AV	04180	1432AV	04183	1434AV	04188	1433AVBB	04187
730PBB-3-3/4	21216	—	3-3/4	3.750	95.3	—	—	10	3.5	7.7	3493	4640AV	05265	4641AV	05266	1434AV	04188	1433AVBB	04187
741BB*	19977	3-1/2"	4	4.044	102.7	—	—	10	3.5	10	4536	2982AV	04653	2981AV	04652	3026AV	04679	3036AVBB	04685
742BB*	19978	4"	4-1/2	4.544	115.4	—	—	10	3.5	11.4	5172	2984AV	04655	2983AV	04654	3026AV	04679	3036AVBB	04685
730EBB-120*	21519	—	—	4.724	120.0	—	—	10	3.5	13	5897	21489	21489	21491	21491	3026AV	04679	3036AVBB	04685
743BB*	19980	5"	5-5/8	5.675	144.1	—	—	10	3.5	19	8619	5135AV	05447	5136AV	05448	3026AV	04679	3036AVBB	04685



*CAT. NO.	UPC NO.	DESCRIPTION
3037AV	04686	Replacement Bushing for 3-1/2" (conduit hole size) and larger punches with manual operation

## Slug-Buster® Knockout Kit with Ratchet Wrench



- 1" Hex Ratchet Wrench allows use with both 3/8" (19.1 mm) and 3/4" (9.5 mm) draw studs.
- High-impact, rugged plastic carrying case.

CAT. NO.	UPC NO.	DESCRIPTION	CAPACITY			
			MILD STEEL		WEIGHT	
			GA	mm	LBS.	kg.
7238SB	34757	1/2" – 2" Conduit Size Slug-Buster® Knockout Punch Kit	10	3.5	10	4.54

### 7238SB/34757 SLUG-BUSTER® KNOCKOUT PUNCH KIT INCLUDES

CAT. NO.	UPC NO.	DESCRIPTION	HOLE SIZE ACTUAL			
			Ø INCH	Ø mm	PG	
34941	34941	Ratchet wrench – 1" Hex				
721-1/2	31756	1/2" Conduit Size Punch	7/8	.885	22.5	16
14722	14722	1/2" Conduit Size Die	7/8	.885	22.5	16
721-3/4	31757	3/4" Conduit Size Punch	—	1.115	28.3	—
124AV	06972	3/4" Conduit Size Die	—	1.115	28.3	—
721-1	31758	1" Conduit Size Punch	—	1.362	34.6	—
126AV	04011	1" Conduit Size Die	—	1.362	34.6	—
721-1-1/4	31759	1-1/4" Conduit Size Punch	—	1.701	43.2	—
128AV	04013	1-1/4" Conduit Size Die	—	1.701	43.2	—
721-1-1/2	31760	1-1/2" Conduit Size Punch	—	1.951	49.6	—
440AV	04061	1-1/2" Conduit Size Die	—	1.951	49.6	—
721-2	31761	2" Conduit Size Punch	2-3/8	2.416	61.5	—
442AV	04063	2" Conduit Size Die	2-3/8	2.416	61.5	—
00042	00042	Ball Bearing Draw Stud with 1" Hex Head-3/8" x 1-5/8"				
304AVBB	04042	Draw Stud-3/4" x 2-15/16"				
34758	34758	Plastic Case				

## Slug-Buster® Manual Knockout Kits



7235BB

- Assortment of commonly used Slug-Buster® knockout punches, packaged to meet the contractor's needs.
- High-impact, rugged plastic carrying case.

CAT. NO.	UPC NO.	DESCRIPTION	CAPACITY			
			MILD STEEL		WEIGHT	
			GA	mm	LBS.	kg.
7235BB	32013	1/2" - 1-1/4" Conduit Size Manual Slug-Buster® Knockout Punch Kit	10	3.5	2.7	1.2
7237BB	32014	1-1/2" and 2" Conduit Size Manual Slug-Buster® Knockout Punch Kit	10	3.5	5.2	2.4

### 7235BB/32013 SLUG-BUSTER® KNOCKOUT PUNCH KIT INCLUDES

CAT. NO.	UPC NO.	DESCRIPTION	HOLE SIZE ACTUAL			
			Ø INCH	Ø mm	PG	
721-1/2	31756	1/2" Conduit Size Punch	7/8	.885	22.5	16
14722	14722	1/2" Conduit Size Die	7/8	.885	22.5	16
00042	00042	Draw Stud-3/8" x 1-5/8"				
721-3/4	31757	3/4" Conduit Size Punch	—	1.115	28.3	—
124AV	06972	3/4" Conduit Size Die	—	1.115	28.3	—
721-1	31758	1" Conduit Size Punch	—	1.362	34.6	—
126AV	04011	1" Conduit Size Die	—	1.362	34.6	—
721-1-1/4	31759	1-1/4" Conduit Size Punch	—	1.701	43.2	—
128AV	04013	1-1/4" Conduit Size Die	—	1.701	43.2	—
249AVBB	04040	Draw Stud-3/4" x 2-1/8"				
31880	31880	Plastic Case				

### 7237BB/32014 SLUG-BUSTER® KNOCKOUT PUNCH KIT INCLUDES

CAT. NO.	UPC NO.	DESCRIPTION	HOLE SIZE ACTUAL			
			Ø INCH	Ø mm	PG	
721-1-1/2	31760	1-1/2" Conduit Size Punch	—	1.951	49.6	—
440AV	04061	1-1/2" Conduit Size Die	—	1.951	49.6	—
721-2	31761	2" Conduit Size Punch	2-3/8	2.416	61.5	—
442AV	04063	2" Conduit Size Die	2-3/8	2.416	61.5	—
304AVBB	04042	Draw Stud-3/4" x 2-15/16"				
32012	32012	Plastic Case				



7237BB



## Slug-Buster® Knockout Kit with Ratchet Wrench – Metric



- 1" (25.4 mm) hex ratchet wrench allows use with both 3/8" (9.5 mm) and 3/4" (19.1 mm) draw studs.
- 9.7 mm Kwik Stepper® step bit included.
- High-impact, rugged plastic carrying case.

CAT. NO.	UPC NO.	DESCRIPTION	WEIGHT	
			LBS.	kg.
36690	36690	Pg-9 through 30.5 mm Manual Slug-Buster® Metric Knockout Punch Kit	4.7	2.1
36691	36691	Pg-9 through Pg-48 and 30.5 mm Manual Slug-Buster® Metric Knockout Punch Kit	9	4.1
36692	36692	ISO-16 through ISO-40 Manual Slug-Buster® Metric Knockout Punch Kit	5.6	2.5
36693	36693	ISO-16 through ISO-63 Manual Slug-Buster® Metric Knockout Punch Kit	9	4.1

CAT. NO.	UPC NO.	DESCRIPTION	HOLE SIZE				CAPACITY		KIT CAT./UPC NO.				
			ACTUAL		PG	ISO	MILD STEEL		36690	36691	36692	36693	
			Ø INCH	Ø mm			GA	mm					
31969	31969	Pg-9 Slug-Buster® Punch	—	0.598	15.2	9	—	14	2.0	✓	✓		
32002	32002	Pg-9 Die	—	0.598	15.2	9	—	14	2.0	✓	✓		
31970	31970	Pg-11 Slug-Buster® Punch	—	0.732	18.6	11	—	14	2.0	✓	✓		
32003	32003	Pg-11 Die	—	0.732	18.6	11	—	14	2.0	✓	✓		
31971	31971	Pg-13 Slug-Buster® Punch	—	0.803	20.4	13	20	14	2.0	✓	✓	✓	✓
32004	32004	Pg-13 Die	—	0.803	20.4	13	20	14	2.0	✓	✓	✓	✓
721-1/2	31756	Pg-16 Slug-Buster® Punch	7/8	0.885	22.5	16	—	10	3.5	✓	✓		
14722	14722	Pg-16 Die	7/8	0.885	22.5	16	—	10	3.5	✓	✓		
31973	31973	Pg-21 Slug-Buster® Punch	—	1.115	28.3	21	—	14	2.0	✓	✓		
32006	32006	Pg-21 Die	—	1.115	28.3	21	—	14	2.0	✓	✓		
36284	36284	30.5 mm Slug-Buster® Punch	1-7/32	1.210	30.5	—	—	14	2.0	✓	✓		
36279	36279	30.5 mm Die	1-7/32	1.210	30.5	—	—	14	2.0	✓	✓		
31975	31975	Pg-29 Slug-Buster® Punch	—	1.457	37.0	29	—	10	3.5		✓		
32008	32008	Pg-29 Die	—	1.457	37.0	29	—	10	3.5		✓		
31976	31976	Pg-36 Slug-Buster® Punch	—	1.850	47.0	36	—	10	3.5		✓		
32009	32009	Pg-36 Die	—	1.850	47.0	36	—	10	3.5		✓		
31978	31978	Pg-48 Slug-Buster® Punch	—	2.362	60.0	48	—	10	3.5		✓		
32011	32011	Pg-48 Die	—	2.362	60.0	48	—	10	3.5		✓		
35163	35163	ISO-16 Slug-Buster® Punch	—	0.638	16.2	—	16	14	2.0			✓	✓
35162	35162	ISO-16 Die	—	0.638	16.2	—	16	14	2.0			✓	✓
35165	35165	ISO-25 Slug-Buster® Punch	1	1.000	25.4	—	25	14	2.0			✓	✓
35164	35164	ISO-25 Die	1	1.000	25.4	—	25	14	2.0			✓	✓
35169	35169	ISO-32 Slug-Buster® Punch	—	1.280	32.5	—	32	10	3.5			✓	✓
35168	35168	ISO-32 Die	—	1.280	32.5	—	32	10	3.5			✓	✓
35158	35158	ISO-40 Slug-Buster® Punch	—	1.595	40.5	—	40	10	3.5			✓	✓
35159	35159	ISO-40 Die	—	1.595	40.5	—	40	10	3.5			✓	✓
35160	35160	ISO-50 Slug-Buster® Punch	2	2.000	50.8	—	50	10	3.5				✓
35161	35161	ISO-50 Die	2	2.000	50.8	—	50	10	3.5				✓
35167	35167	ISO-63 Slug-Buster® Punch	2-1/2	2.500	63.5	—	63	10	3.5				✓
35166	35166	ISO-63 Die	2-1/2	2.500	63.5	—	63	10	3.5				✓
249AVBB	04040	Draw Stud – 3/4" x 2-1/8"										✓	
304AVBB	04042	Draw Stud – 3/4" x 2-15/16"										✓	✓
36018	36018	Kwik Stepper® step bit 9.7 mm								✓	✓	✓	✓
34941	34941	Ratchet wrench – 1" Hex								✓	✓	✓	✓
00042	00042	Ball Bearing Drive Nut with 1" hex head, 3/8" x 3"								✓	✓	✓	✓
36685	36685	Plastic Case								✓	✓	✓	✓

## Slug-Buster® Knockout Punch Kits for Ratchet/Hydraulic Drivers



- Packaged in carton for easy insertion into your existing case.
- Replacement punch kits for battery-powered, hydraulic and ratchet drivers.

CAT. NO.	UPC NO.	DESCRIPTION	WEIGHT	
			LBS.	kg.
7216	32017	1/2" - 2" Conduit Size Knockout Punch and Die Kit	5.5	2.5
7214E	32398	Pg-9 through 30.5 mm Slug-Buster® Pg Punch Kit	1.3	.6
7215E	32803	Pg-9 through Pg-48 and 30.5 mm Slug-Buster® Pg Punch Kit	5.1	2.3
35617	35617	ISO-16 through ISO-40 Slug-Buster® ISO Punch Kit	1.6	.7
06892	06892	ISO-16 through ISO-63 Slug-Buster® ISO Punch Kit	5.5	2.5

CAT. NO.	UPC NO.	DESCRIPTION	HOLE SIZE						CAPACITY-		KIT CAT./UPC NO.				
			CONDUIT & PIPE SIZE	ACTUAL		PG	ISO	MILD STEEL	GA	mm	7216/	7214E/	7215E/	35617	06892
				Ø INCH	Ø mm						32017	32398	32803		
721-1/2	31756	1/2" Conduit Size Punch	1/2"	7/8	.885	22.5	16	—	10	3.5	✓	✓	✓		
14722	14722	1/2" Conduit Size Die	1/2"	7/8	.885	22.5	16	—	10	3.5	✓	✓	✓		
721-3/4	31757	3/4" Conduit Size Punch	3/4"	—	1.115	28.3	—	—	10	3.5	✓				
124AV	06972	3/4" Conduit Size Die	3/4"	—	1.115	28.3	—	—	10	3.5	✓				
721-1	31758	1" Conduit Size Punch	1"	—	1.362	34.6	—	—	10	3.5	✓				
126AV	04011	1" Conduit Size Die	1"	—	1.362	34.6	—	—	10	3.5	✓				
721-1-1/4	31759	1-1/4" Conduit Size Punch	1-1/4"	—	1.701	43.2	—	—	10	3.5	✓				
128AV	04013	1-1/4" Conduit Size Die	1-1/4"	—	1.701	43.2	—	—	10	3.5	✓				
721-1-1/2	31760	1-1/2" Conduit Size Punch	1-1/2"	—	1.951	49.6	—	—	10	3.5	✓				
440AV	04061	1-1/2" Conduit Size Die	1-1/2"	—	1.951	49.6	—	—	10	3.5	✓				
721-2	31761	2" Conduit Size Punch	2"	2-3/8	2.416	61.5	—	—	10	3.5	✓				
442AV	04063	2" Conduit Size Die	2"	2-3/8	2.416	61.5	—	—	10	3.5	✓				
31969	31969	Pg-9 Punch	—	—	.598	15.2	9	—	14	2.0		✓	✓		
32002	32002	Pg-9 Die	—	—	.598	15.2	9	—	14	2.0		✓	✓		
31970	31970	Pg-11 Punch	—	—	.732	18.6	11	—	14	2.0		✓	✓		
32003	32003	Pg-11 Die	—	—	.732	18.6	11	—	14	2.0		✓	✓		
31971	31971	Pg-13 Punch	—	—	.803	20.4	13	20	14	2.0		✓	✓	✓	✓
32004	32004	Pg-13 Die	—	—	.803	20.4	13	20	14	2.0		✓	✓	✓	✓
31973	31973	Pg-21 Punch	—	—	1.115	28.3	21	—	14	2.0		✓	✓		
32006	32006	Pg-21 Die	—	—	1.115	28.3	21	—	14	2.0		✓	✓		
36284	36284	30.5 mm Punch	—	1-7/32	1.210	30.5	—	—	10	3.5		✓	✓		
36279	36279	30.5 mm Die	—	1-7/32	1.210	30.5	—	—	10	3.5		✓	✓		
31975	31975	Pg-29 Punch	—	—	1.457	37.0	29	—	10	3.5			✓		
32008	32008	Pg-29 Die	—	—	1.457	37.0	29	—	10	3.5			✓		
31976	31976	Pg-36 Punch	—	—	1.850	47.0	36	—	10	3.5			✓		
32009	32009	Pg-36 Die	—	—	1.850	47.0	36	—	10	3.5			✓		
31978	31978	Pg-48 Punch	—	—	2.362	60.0	48	—	10	3.5			✓		
32011	32011	Pg-48 Die	—	—	2.362	60.0	48	—	10	3.5			✓		
35163	35163	ISO-16 Punch	—	—	0.638	16.2	—	16	14	2.0				✓	✓
35162	35162	ISO-16 Die	—	—	0.638	16.2	—	16	14	2.0				✓	✓
35165	35165	ISO-25 Punch	—	1	1.000	25.4	—	25	14	2.0				✓	✓
35164	35164	ISO-25 Die	—	1	1.000	25.4	—	25	14	2.0				✓	✓
35169	35169	ISO-32 Punch	—	—	1.280	32.5	—	32	10	3.5				✓	✓
35168	35168	ISO-32 Die	—	—	1.280	32.5	—	32	10	3.5				✓	✓
35158	35158	ISO-40 Punch	—	—	1.595	40.5	—	40	10	3.5				✓	✓
35159	35159	ISO-40 Die	—	—	1.595	40.5	—	40	10	3.5				✓	✓
35160	35160	ISO-50 Punch	—	2	2.000	50.8	—	50	10	3.5					✓
35161	35161	ISO-50 Die	—	2	2.000	50.8	—	50	10	3.5					✓
35167	35167	ISO-63 Punch	—	—	2.520	64.0	—	63	10	3.5					✓
35166	35166	ISO-63 Die	—	—	2.520	64.0	—	63	10	3.5					✓



## Gator-Plus™ Battery-Powered Knockout Punch Driver Kits



LS6012A

- Punches a hole for 2" conduit (61.5 mm) in only 12 seconds.
- Angled pistol grip allows easy one handed control and positioning.
- Tool senses when the hole is completely punched and automatically shuts off to prevent damage to the punch and die.
- Develops 6.7 tons of hydraulic force, capable of punching up to 2" conduit (61.5 mm) size holes in 10 gauge (3.5 mm) mild steel and 12 gauge (2.5 mm) stainless steel.
- Three choices of battery chargers – 115 volt, 220 volt, or 12 volt. Punches approximately 80 1/2" conduit size holes or 40 2" conduit size holes in 10 gauge mild steel per battery charge.
- U.S. Patents #6,065,326, and #6,206,663

### SPECIFICATIONS

<b>Weight (driver with battery only)</b>	8.25 lbs. (3.7 kg)
<b>Overall Length (ram retracted)</b>	10.3 in. (262 mm)
<b>Height</b>	11.5 in. (292 mm)
<b>Maximum Punch Force</b>	6.7 tons (60 kN)
<b>Maximum Round Punch Size (in 10 gauge mild steel)</b>	2.42 in. dia. (61.5 mm dia.)
<b>Maximum Square Punch Size (in 10 gauge mild steel)</b>	2-11/16 in. x 2-11/16 in. (68.0 x 68.0 mm)
<b>Maximum Rectangular Punch Size (in 10 gauge mild steel)</b>	1.378 x 2.559 in. (35.0 x 65.0 mm)
<b>Maximum Ram Travel</b>	0.87 in (22 mm)
<b>Charging Time</b>	Approximately 1 hour
<b>Battery Voltage</b>	12 volts NiCd

CAT. NO.	UPC NO.	DESCRIPTION	WEIGHT	
			LBS.	kg.
LS6011A	03557	Battery-powered driver with 115 volt charger, 2 batteries, 2 draw studs, 1 adapter, and 1 spacer and case	23	10.4
LS6012A	03558	Battery-powered driver with 12 volt charger, 2 batteries, 2 draw studs, 1 adapter, and 1 spacer and case	23	10.4
LS6022A	03559	Battery-powered driver with 220 volt charger, 2 batteries, 2 draw studs, 1 adapter, and 1 spacer and case	23	10.4
LS6011B	04311	Battery-powered driver with 115 volt charger, 2 batteries, 1/2" through 2" Slug-Buster® conduit size punches, 2 draw studs, 1 adapter, and 1 spacer and case	27	12.2
LS6012B	04661	Battery-powered driver with 12 volt charger, 2 batteries, 1/2" through 2" Slug-Buster® conduit size punches, 2 draw studs, 1 adapter, and 1 spacer and case	27	12.2
LS6022B	04312	Battery-powered driver with 220 volt charger, 2 batteries, 1/2" through 2" Slug-Buster® conduit size punches, 2 draw studs, 1 adapter, and 1 spacer and case	27	12.2

See page 17 for complete parts list for all kits.

### STEEL CAPACITIES FOR CONDUIT SIZES

STUD AND ACCESSORIES	STANDARD PUNCHES AND SLUG-BUSTERS®							SLUG-SPLITTERS®						Electronic Connector Punches RS-232, 229, 231, 234, 238	
	1/2"	3/4"	1-7/32"	1"	1-1/4"	1-1/2"	2"	1/2"	3/4"	1-7/32"	1"	1-1/4"	1-1/2"		2"
	CON.	CON.	CON.	CON.	CON.	CON.	CON.	CON.	CON.	CON.	CON.	CON.	CON.		CON.
	Ø 0.885" 22.5mm	Ø 1.115" 28.3mm	Ø 1.210" 30.5mm	Ø 1.362" 34.6mm	Ø 1.701" 43.2mm	Ø 1.951" 49.6mm	Ø 2.415" 61.5mm	Ø 0.885" 22.5mm	Ø 1.115" 28.3mm	Ø 1.210" 30.5mm	Ø 1.362" 34.6mm	Ø 1.701" 43.2mm	Ø 1.951" 49.6mm	Ø 2.416" 61.5mm	
1614SS Draw Stud 1924AA Spacer 33967 Adapter	Diagonal Hatching														
1924AA Spacer ② 29451 7/16" Draw Stud								Diagonal Hatching							
29451 7/16" Draw Stud ②		Grid	Grid	Grid	Grid	Grid	Grid								
1924AA Spacer 31872 3/4" Draw Stud		Diagonal Hatching	Diagonal Hatching	Diagonal Hatching	Diagonal Hatching	Diagonal Hatching	Diagonal Hatching		Diagonal Hatching	Diagonal Hatching	Diagonal Hatching	Diagonal Hatching	Diagonal Hatching	Diagonal Hatching	
31872 3/4" Draw Stud						Diagonal Hatching	Diagonal Hatching						Diagonal Hatching	Diagonal Hatching	
33967 Adapter														Grid	

① The Slug-Buster® punches may not split the slug when used with this adapter, because of the small pilot hole.

② 29451 sold separately. See page 37 for ordering information.

Diagonal Hatching 10 GA. (0.1345" [3.5 mm]) MILD STEEL

Diagonal Hatching 10 GA. (0.1345" [3.5 mm]) STAINLESS STEEL

Grid 14 GA. (0.0747" [2 mm]) MILD STEEL

Diagonal Hatching 12 GA. (0.1046" [2.5 mm]) STAINLESS STEEL

Grid 16 GA. (0.0598" [1.5 mm]) MILD STEEL AND 1/8" ALUMINUM

# Gator-Plus™ Corded Knockout Punch Driver Kits



- Punches a hole for 2" conduit (61.5 mm) in only 12 seconds.
- Angled pistol grip allows easy one handed control and positioning.
- Tool senses when the hole is completely punched and automatically shuts off to prevent damage to the punch and die.
- Develops 6.7 tons of hydraulic force, capable of punching up to 2" conduit (61.5 mm) size holes in 10 gauge (3.5 mm) mild steel and 12 gauge (2.5 mm) stainless steel.
- Operates directly from 120V/60Hz or 230V/50Hz electrical outlets. No need to charge batteries or worry about running out of power.
- Equipped with 15 foot (5 m) cord. Can be used with extension cords.
- U.S. Patents #6,065,326, and #6,206,663

## SPECIFICATIONS

<b>Weight (driver)</b>	8.25 lbs. (3.7 kg)
<b>Overall Length (ram retracted)</b>	10.3 in. (262 mm)
<b>Height</b>	11.5 in. (292 mm)
<b>Maximum Punch Force</b>	6.7 tons (60 kN)
<b>Maximum Round Punch Size (in 10 gauge mild steel)</b>	2.42 in. dia. (61.5 mm dia.)
<b>Maximum Square Punch Size (in 10 gauge mild steel)</b>	2-11/16 in. x 2-11/16 in. (68.0 x 68.0 mm)
<b>Maximum Rectangular Punch Size (in 10 gauge mild steel)</b>	1.378 x 2.559 in. (35.0 x 65.0 mm)
<b>Maximum Ram Travel</b>	0.87 in (22 mm)
<b>Operating Voltage</b>	120V, 60Hz 230V, 50Hz

CAT. NO.	UPC NO.	DESCRIPTION	WEIGHT	
			LBS.	kg
CLS6011A	01496	Corded driver, 120 volts/60Hz, with 2 draw studs, 1 adapter, and 1 spacer and case.	23	10.4
CLS6022A	01497	Corded driver, 230 volts/50Hz, with 2 draw studs, 1 adapter, and 1 spacer and case.	23	10.4
CLS6011B	01498	Corded driver, 120 volts/60Hz, with 1/2" through 2" Slug-Buster conduit size punches, 2 draw studs, 1 adapter, and 1 spacer and case.	23	10.4
CLS6022B	01499	Corded driver, 230 volts/50Hz, with 1/2" through 2" Slug-Buster conduit size punches, 2 draw studs, 1 adapter, and 1 spacer and case.	27	12.2

See page 17 for complete parts list for all kits.

## STEEL CAPACITIES FOR CONDUIT SIZES

STUD AND ACCESSORIES	STANDARD PUNCHES AND SLUG-BUSTERS®						SLUG-SPLITTERS®							
	1/2" CON.	3/4"	1-7/32" CON.	1" CON.	1-1/4" CON.	1-1/2" CON.	2"	1/2" CON.	3/4" CON.	1-7/32" CON.	1" CON.	1-1/4" CON.	1-1/2" CON.	2" CON.
	Ø 0.885" 22.5mm	Ø 1.115" 28.3mm	Ø 1.210" 30.5mm	Ø 1.362" 34.6mm	Ø 1.701" 43.2mm	Ø 1.951" 49.6mm	Ø 2.415" 61.5mm	Ø 0.885" 22.5mm	Ø 1.115" 28.3mm	Ø 1.210" 30.5mm	Ø 1.362" 34.6mm	Ø 1.701" 43.2mm	Ø 1.951" 49.6mm	Ø 2.416" 61.5mm
1614SS Draw Stud														
1924AA Spacer	■													
33967 Adapter														
1924AA Spacer ②								▨						
29451 7/16" Draw Stud														
29451 7/16" Draw Stud ②		▩	▩	▩	▩	▩								
1924AA Spacer														
31872 3/4" Draw Stud		■	■	■	■	■			▨	▨	▨	▨	▨	
31872 3/4" Draw Stud							■							
33967 Adapter														▩

Electronic Connector Punches  
RS-232, 229, 231, 234, 238

① The Slug-Buster® punches may not split the slug when used with this adapter, because of the small pilot hole.  
② 29451 sold separately. See page 37 for ordering information.

10 GA. (0.1345" [3.5 mm]) MILD STEEL    
 10 GA. (0.1345" [3.5 mm]) STAINLESS STEEL    
 14 GA. (0.0747" [2 mm]) MILD STEEL  
 12 GA. (0.1046" [2.5 mm]) STAINLESS STEEL    
 16 GA. (0.0598" [1.5 mm]) MILD STEEL AND 1/8" ALUMINUM



## Battery-Powered Knockout Punch Driver Kits Parts List

CAT. NO.	UPC NO.	DESCRIPTION	HOLE SIZE				KIT CAT./UPC NO.					
			CONDUIT & PIPE SIZE	ACTUAL		PG	LS6011A/03557 LS6012A/03558 LS6022A/03559	LS6011B/04311 LS6012B/04661 LS6022B/04312	CLS6011A CLS6022A	CLS6011B CLS6022B		
				Ø INCH	Ø mm							
Punches and Dies	721-1/2	31756	1/2" Conduit Size Slug-Buster® Punch	1/2"	7/8	0.885	22.5	16		✓		✓
	14722	14722	1/2" Conduit Size Die	1/2"	7/8	0.885	22.5	16		✓		✓
	721-3/4	31757	3/4" Conduit Size Slug-Buster® Punch	3/4"	—	1.115	28.3	21		✓		✓
	124AV	06972	3/4" Conduit Size Die	3/4"	—	1.115	28.3	21		✓		✓
	721-1	31758	1" Conduit Size Slug-Buster® Punch	1"	—	1.362	34.6	—		✓		✓
	126AV	04011	1" Conduit Size Die	1"	—	1.362	34.6	—		✓		✓
	721-1-1/4	31759	1-1/4" Conduit Size Slug-Buster® Punch	1-1/4"	1-11/16	1.701	43.2	—		✓		✓
	128AV	04013	1-1/4" Conduit Size Die	1-1/4"	1-11/16	1.701	43.2	—		✓		✓
	721-1-1/2	31760	1-1/2" Conduit Size Slug-Buster® Punch	1-1/2"	1-15/16	1.951	49.6	—		✓		✓
	440AV	04061	1-1/2" Conduit Size Die	1-1/2"	1-15/16	1.951	49.6	—		✓		✓
	721-2	31761	2" Conduit Size Slug-Buster® Punch	2"	2-3/8	2.416	61.5	—		✓		✓
	442AV	04063	2" Conduit Size Die	2"	2-3/8	2.416	61.5	—		✓		✓
	Draw Studs and Misc.	1614SS	30043	Draw Stud-3/8" x 2-13/16"						✓	✓	✓
31872		31872	Draw Stud-3/4" x 4-1/8"						✓	✓	✓	✓
1924AA		03248	Spacer-Short						✓	✓	✓	✓
33967		33967	Stud Adapter-3/8"						✓	✓	✓	✓
01686		01686	Metal Case						✓	✓	✓	✓
<b>Optional Accessories for LS6011B, LS6012B, and LS6022B (not included in kits)</b>												
29451	29451	Draw Stud-7/16" x 4-1/2" for Slug Splitter Stainless Steel Punches										

## Slug-Buster® Ram and Foot Pump Hydraulic Driver Kits



- Foot operation frees both hands to operate punch.
- Punches 10 times faster than wrench method.
- Will also drive 751 Cable Cutter head.
- Powerful 11 ton hydraulic ram.
- Can be used with all standard round, Slug-Buster® and Slug-Splitter® punch sizes.
- Can be used with non-round punches (adapter may be required).

CAT. NO.	UPC NO.	DESCRIPTION	WEIGHT LBS. kg.
7625	25097	Driver, foot pump, steel case	37 17
7606SB	07173	Driver, foot pump, Slug-Buster® punches, dies and draw studs for 1/2" through 2" conduit, steel case	42 19
7610SB	07174	Driver, foot pump, Slug-Buster® punches, dies and draw studs for 1/2" through 4" conduit, steel case	60 27

### STEEL CAPACITIES FOR CONDUIT SIZES

REQUIRED DRAW STUD AND ACCESSORIES	STANDARD & SLUG-BUSTER® PUNCHES						STANDARD				SLUG-SPLITTERS®					
	1/2"	3/4"	1"	1-1/4"	1-1/2"	2"	2-1/2"	3"	3-1/2"	4"	1/2"	3/4"	1"	1-1/4"	1-1/2"	2"
3/4" Stud (03294), 3/8" Stud (30043) & Spacers	///															
3/4" Stud (03294), Long Spacer		///														
3/4" Stud (03294), Short Spacer					///											
3/4" Stud (03294)							///									
3/4" Stud (03294), & Sleeve (03170)									///							
7/16" Stud (29451)											///					
3/4" Stud (29452) & Spacer												///	///	///	///	///

/// 10 GA. MILD STEEL

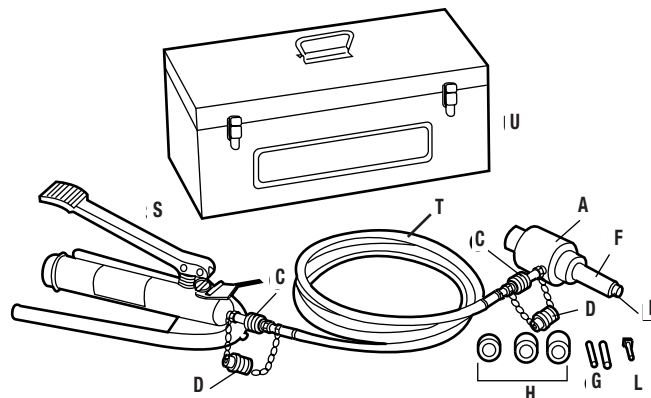
/// 10 GA. STAINLESS STEEL

## Ram and Foot Pump Kits Parts List

CAT. NO.	UPC NO.	DESCRIPTION	HOLE SIZE					KIT CAT./UPC NO.		
			CONDUIT & PIPE SIZE	ACTUAL		PG	7625/25097	7606SB/07173	7610SB/07174	
				Ø INCH	Ø mm					
721-1/2	31756	1/2" Conduit Size Slug-Buster® Punch	1/2"	7/8	0.885	22.5	16		1	1
14722	14722	1/2" Conduit Size Die	1/2"	7/8	0.885	22.5	16		1	1
721-3/4	31757	3/4" Conduit Size Slug-Buster® Punch	3/4"	—	1.115	28.3	21	—	1	1
124AV	06972	3/4" Conduit Size Die	3/4"	—	1.115	28.3	21		1	1
721-1	31758	1" Conduit Size Slug-Buster® Punch	1"	—	1.362	34.6	—		1	1
126AV	04011	1" Conduit Size Die	1"	—	1.362	34.6	—		1	1
721-1-1/4	31759	1-1/4" Conduit Size Slug-Buster® Punch	1-1/4"	1-11/16	1.701	43.2	—		1	1
128AV	04013	1-1/4" Conduit Size Die	1-1/4"	1-11/16	1.701	43.2	—		1	1
721-1-1/2	31760	1-1/2" Conduit Size Slug-Buster® Punch	1-1/2"	1-15/16	1.951	49.6	—		1	1
440AV	04061	1-1/2" Conduit Size Die	1-1/2"	1-15/16	1.951	49.6	—		1	1
721-2	31761	2" Conduit Size Slug-Buster® Punch	2"	2-3/8	2.416	61.5	—		1	1
442AV	04063	2" Conduit Size Die	2"	2-3/8	2.416	61.5	—		1	1
1429AV	04175	2-1/2" Conduit Size Punch	2-1/2"	2-7/8	2.914	74.0	—			1
1430AV	04177	2-1/2" Conduit Size Die	2-1/2"	2-7/8	2.914	74.0	—			1
1431AV	04180	3" Conduit Size Punch	3"	3-1/2	3.539	89.9	—			1
1432AV	04183	3" Conduit Size Die	3"	3-1/2	3.539	89.9	—			1
2982AV	04653	3-1/2" Conduit Size Punch	3-1/2"	4	4.044	102.7	—			1
2981AV	04652	3-1/2" Conduit Size Die	3-1/2"	4	4.044	102.7	—			1
2984AV	04655	4" Conduit Size Punch	4"	4-1/2	4.544	115.4	—			1
2983AV	04654	4" Conduit Size Die	4"	4-1/2	4.544	115.4	—			1
746	17091	(A) Ram (includes 1 ea. of items B, C, and D)								
2113AA	03294	(B) Draw Stud—3/4" x 5-3/8"						1	1	1
54167	54167	(C) Female Coupler—1/4"						1	1	1
54168	54168	(D) Dust Plug						1	1	1
1557AA	03170	(F) Punch Sleeve						1	1	1
1614SS	30043	(G) Draw stud—3/8"x 2-13/16"						2	2	2
15908	15908	(H) Spacer Group (includes 1 ea. of items I, J, and K)								
1924AA	03248	(I) Spacer-Short						1	1	1
1925AA	03249	(J) Spacer-Medium						1	1	1
1926AA	06904	(K) Spacer-Long						1	1	1
34410	34410	(L) Kwik Stepper® Step Bit 1/2"						1	1	1
1725	31353	(S) Hydraulic Foot Pump (includes 1 ea. – 54167 female coupler and 54168 dust plug)						1	1	1
37729	37729	(T) High Pressure Hose Unit – 1/4" x 10'; filled with hydraulic oil; (includes the following 2 items)								
54169	54169	– Couplers						2	2	2
54170	54170	– Dust Caps						2	2	2
23955	23955	(U) Steel case						1	1	1
25094	25094	Tray						1	1	1

### RAM AND FOOT PUMP HYDRAULIC DRIVER PARTS IDENTIFICATION

(Match letters above to drawing.)



## Slug-Buster® Ram and Hand Pump Hydraulic Driver Kits



7646

- Fast, easy and simple to operate.
- Compact design for field use on construction sites and maintenance jobs.
- Punches 10 times faster than wrench method.
- Will also drive 751 Cable Cutter head.
- Can be used with all standard round, Slug-Buster® and Slug-Splitter® punch sizes.
- Can be used with non-round punches (adapter may be required).
- 3-foot hose.
- Powerful 11-ton hydraulic ram.

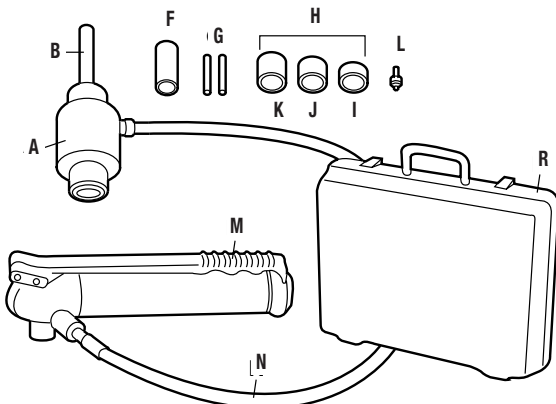
CAT. NO.	UPC NO.	DESCRIPTION	WEIGHT LBS. kg.
7646	15906	Driver, hand pump, draw studs, adapter, spacers, Kwik Stepper® Step Bit and plastic case	20 9.1
7306SB	34360	Driver, hand pump, Slug-Buster® punches, dies and draw studs for 1/2" through 2" conduit, adapter, spacers, Kwik Stepper® Step Bit and plastic case	24 10.9
7310SB	34361	Driver, hand pump, Slug-Buster® punches, dies and draw studs for 1/2" through 2" and 2-1/2" through 4" standard conduit size punches, dies and draw studs, adapter, spacers, Kwik Stepper® Step Bit and steel case	54 24.5
7646PgSB	32799	Metric – Driver, Slug-Buster® Pg punches, dies and draw studs for 15.2 mm through 60.0 mm, adapter, spacers, Kwik Stepper® Step Bit and plastic case	24 10.9
38520	38520	Driver, hand pump, Slug-Buster® punches and draw studs for 1/2" through 3" and 4" conduit, adapter, spacers, Kwik Stepper® Step Bit and steel case	48 21.8

### STEEL CAPACITIES FOR CONDUIT SIZES

REQUIRED DRAW STUD AND ACCESSORIES	STANDARD & SLUG-BUSTER PUNCHES						STANDARD				SLUG-SPLITTERS®					
	1/2"	3/4"	1"	1-1/4"	1-1/2"	2"	2-1/2"	3"	3-1/2"	4"	1/2"	3/4"	1"	1-1/4"	1-1/2"	2"
3/4" Stud (03294), 3/8" Stud (30043) & Spacers	///															
3/4" Stud (03294), Long Spacer		///														
3/4" Stud (03294), Short Spacer				///												
3/4" Stud (03294)						///										
3/4" Stud (03294), & Sleeve (03170)								///								
7/16" Stud (29451)										///						
3/4" Stud (29452) & Spacer											///	///	///	///	///	///

10 GA. MILD STEEL

10 GA. STAINLESS STEEL



### RAM AND HAND PUMP HYDRAULIC DRIVER PARTS IDENTIFICATION

KEY	CAT./UPC NO.	DESCRIPTION
A	746 / 17091	Ram (includes Item B)
B	2113AA / 03294	Draw Stud–3/4" x 5-3/8"
F	1557AA / 03170	Punch Sleeve
G	1614SS / 30043	Draw Stud–3/8" x 2-13/16"
H	15908	Spacer Group (includes Items I, J and K)
I	1924AA / 03248	Spacer-Short
J	1925AA / 03249	Spacer-Medium
K	1926AA / 06904	Spacer-Long
L	34410	Kwik Stepper® Step Bit 1/2"
M	767 / 13284	Hydraulic Hand Pump
N	06302 / 06302	High Pressure Hose–1/4" x 3'
R	30206	Plastic Case



## Ram and Hand Pump Kits Parts List

CAT. NO.	UPC NO.	DESCRIPTION	HOLE SIZE						KIT CAT./UPC NO.				
			CONDUIT & PIPE SIZE	ACTUAL		PG	ISO	7646/15906	7306SB/34360	7310SB/34361	7646PGSB/32799	38520	
				Ø INCH	Ø mm								
721-1/2	31756	1/2" Conduit Size Slug-Buster® Punch	1/2"	7/8	0.885	22.5	16	—		1	1	1	1
14722	14722	1/2" Conduit Size Die	1/2"	7/8	0.885	22.5	16	—		1	1	1	1
721-3/4	31757	3/4" Conduit Size Slug-Buster® Punch	3/4"	—	1.115	28.3	21	—		1	1		1
124AV	06972	3/4" Conduit Size Die	3/4"	—	1.115	28.3	21	—		1	1		1
721-1	31758	1" Conduit Size Slug-Buster® Punch	1"	—	1.362	34.6	—	—		1	1		1
126AV	04011	1" Conduit Size Die	1"	—	1.362	34.6	—	—		1	1		1
721-1-1/4	31759	1-1/4" Conduit Size Slug-Buster® Punch	1-1/4"	1-11/16	1.701	43.2	—	—		1	1		1
128AV	04013	1-1/4" Conduit Size Die	1-1/4"	1-11/16	1.701	43.2	—	—		1	1		1
721-1-1/2	31760	1-1/2" Conduit Size Slug-Buster® Punch	1-1/2"	1-15/16	1.951	49.6	—	—		1	1		1
440AV	04061	1-1/2" Conduit Size Die	1-1/2"	1-15/16	1.951	49.6	—	—		1	1		1
721-2	31761	2" Conduit Size Slug-Buster® Punch	2"	2-3/8	2.416	61.5	—	—		1	1		1
442AV	04063	2" Conduit Size Die	2"	2-3/8	2.416	61.5	—	—		1	1		1
1429AV	04175	2-1/2" Conduit Size Punch	2-1/2"	2-7/8	2.914	74.0	—	—			1		1
1430AV	04177	2-1/2" Conduit Size Die	2-1/2"	2-7/8	2.914	74.0	—	—			1		1
1431AV	04180	3" Conduit Size Punch	3"	3-1/2	3.539	89.9	—	—			1		1
1432AV	04183	3" Conduit Size Die	3"	3-1/2	3.539	89.9	—	—			1		1
2982AV	04653	3-1/2" Conduit Size Punch	3-1/2"	4	4.044	102.7	—	—			1		
2981AV	04652	3-1/2" Conduit Size Die	3-1/2"	4	4.044	102.7	—	—			1		
2984AV	04655	4" Conduit Size Punch	4"	4-1/2	4.544	115.4	—	—			1		1
2983AV	04654	4" Conduit Size Die	4"	4-1/2	4.544	115.4	—	—			1		1
31969	31969	Slug-Buster® Punch	—	—	0.598	15.2	9	—				1	
32002	32002	Die	—	—	0.598	15.2	9	—				1	
31970	31970	Slug-Buster® Punch	—	—	0.732	18.6	11	—				1	
32003	32003	Die	—	—	0.732	18.6	11	—				1	
31971	31971	Slug-Buster® Punch	—	—	0.803	20.4	13	20				1	
32004	32004	Die	—	—	0.803	20.4	13	20				1	
31973	31973	Slug-Buster® Punch	3/4"	—	1.115	28.3	21	—				1	
32006	32006	Die	3/4"	—	1.115	28.3	21	—				1	
36284	36284	30.5 mm Slug-Buster® Punch	—	1-7/32	1.210	30.5	—	—				1	
36279	36279	30.5 mm Die	—	1-7/32	1.210	30.5	—	—				1	
31975	31975	Slug-Buster® Punch	—	—	1.457	37.0	29	—				1	
32008	32008	Die	—	—	1.457	37.0	29	—				1	
31976	31976	Slug-Buster® Punch	—	—	1.850	47.0	36	—				1	
32009	32009	Die	—	—	1.850	47.0	36	—				1	
31978	31978	Slug-Buster® Punch	—	—	2.362	60.0	48	—				1	
32011	32011	Die	—	—	2.362	60.0	48	—				1	
746	17091	Ram (includes following item)							1	1	1	1	1
2113AA	03294	– Draw Stud–3/4" x 5-3/8"							1	1	1	1	1
1557AA	03170	Punch Sleeve							1	1	1	1	1
1614SS	30043	Draw Stud–3/8"x 2-13/16"							2	2	2	2	2
15908	15908	Spacer Group (includes 1 ea. of the following 3 items)											
1924AA	03248	– Spacer-Short							1	1	1	1	1
1925AA	03249	– Spacer-Medium							1	1	1	1	1
1926AA	06904	– Spacer-Long							1	1	1	1	1
34410	34410	Kwik Stepper® Step Bit 1/2"							1	1	1	1	1
767	13284	Hydraulic Hand Pump							1	1	1	1	1
06302	06302	High Pressure Hose–1/4" x 3'							1	1	1	1	
30206	30206	Plastic Case							1	1		1	
18402	18402	Steel Case									1		1
25094	25094	Punch Tray									1		

Punches and Dies

Draw Studs and Misc.

## Quick Draw® Hydraulic Punch Driver and Kits


 7806SB  
 Quick Draw Kit


7706 Flex Driver


 7906SB  
 Quick Draw 90 Kit

The Quick Draw®, Quick Draw 90®, and Quick Draw® Flex feature:

- Compact, lightweight design for portability and fast, easy one-person operation.
- Develops 8 tons of hydraulic force for easy punching, even in 10-gauge stainless steel depending on individual punch capacities.
- Quick Draw® is perfect for fast, straight-on front panel punching.
- Quick Draw 90®'s right angle driver head rotates over 180 degrees for maximum flexibility in tight working areas.
- Quick Draw® Flex allows unlimited driver orientation to simplify access to work area.
- Can be used with non-round punches within the capacity of the tool (adapter may be required).

CAT. NO.	UPC NO.	DESCRIPTION	WEIGHT	
			LBS.	kg
7704SB	10475	Quick Draw® Flex Driver, 2 draw studs, 1 adapters, 1 spacer and case	12.1	5.5
7706SB	10476	Standard – Quick Draw® Flex Driver, 1/2" through 2" Slug Buster® conduit size punches and dies 2 draw studs, 1 adapter, 1 spacer and case	17.3	7.9
7804SB	34292	Quick Draw® Driver, 2 draw studs, 1 adapter, 1 spacer and case	10	4.5
7806SB	34293	Standard – Quick Draw® Driver, 1/2" through 2" Slug Buster® conduit size punches and dies 2 draw studs, 1 adapter, 1 spacer and case	14	6.4
7804E	34291	Metric – Quick Draw® Driver, 2 draw studs, 1 adapter, 1 spacer and case	9.4	4.3
7804ESB	35611	Metric – Quick Draw® Driver, Slug-Buster® Pg punches and dies 15.2 mm through 30.5 mm, 2 draw studs, 1 adapter, 1 spacer and case	10.3	4.7
7804ISO	35614	Metric – Quick Draw® Driver, Slug-Buster® ISO punches and dies 16.2 mm through 40.5 mm, 2 draw studs, 1 adapter, 1 spacer and case	11.4	5.2
7904SB	33794	Quick Draw 90® Driver, 2 draw studs, 1 adapter, 1 spacer and case	10	4.5
7906SB	34300	Quick Draw 90® Driver, 1/2" through 2" Slug-Buster® conduit size punches and dies, draw studs, 1 adapter, 1 spacer and case	14	6.4
7904E	34299	Metric – Quick Draw 90® Driver, 2 draw studs, 1 adapter, 1 spacer and case	11	5.0
7904ESB	35615	Metric – Quick Draw 90® Driver, Slug-Buster® Pg punches and dies 15.2 mm through 30.5 mm, 2 draw studs, 1 adapter, 1 spacer and case	11	5.0
7904ISO	35616	Metric – Quick Draw 90® Driver, Slug-Buster® ISO punches and dies 16.2 mm through 40.5 mm, 2 draw studs, 1 adapter, 1 spacer and case	12.2	5.5

See next page for complete parts list for all kits.

### STEEL CAPACITIES FOR CONDUIT SIZES

REQUIRED DRAW STUD AND ACCESSORIES	STANDARD PUNCHES AND SLUG-BUSTERS®							SLUG-SPLITTERS®			
	1/2"	3/4"	1-7/32" OILTIGHT	1"	1-1/4"	1-1/2"	2"	1/2"	3/4"	1-7/32" OILTIGHT	1-1/4"
3/8" Draw Stud											
Spacer & 7/16" Draw Stud											
Adapter & 7/16" Draw Stud											
Spacer & 3/4" Draw Stud											
3/4" Draw Stud											

10 GA. MILD STEEL

14 GA. MILD STEEL

10 GA. STAINLESS STEEL

## Parts List for Quick Draw®, Quick Draw 90® and Quick Draw® Flex Kits

CAT. NO.	UPC NO.	DESCRIPTION	HOLE SIZE					KIT CAT./UPC NO.											
			CONDUIT & PIPE SIZE	ACTUAL		PG	ISO	7704SB/10475	7706SB/10476	7804E/34291	7804ESB/35611	7804ISO/35614	7804SB/34292	7806SB/34293	7904E/34299	7904ESB/35615	7904ISO/35616	7904SB/33794	7906SB/34300
				Ø INCH	Ø mm														
721-1/2	31756	1/2" Conduit Size Slug-Buster® Punch	1/2"	7/8	0.885	22.5	16	—	✓					✓					✓
14722	14722	1/2" Conduit Size Die	1/2"	7/8	0.885	22.5	16	—	✓					✓					✓
721-3/4	31757	3/4" Conduit Size Slug-Buster® Punch	3/4"	—	1.115	28.3	21	—	✓					✓					✓
124AV	06972	3/4" Conduit Size Die	3/4"	—	1.115	28.3	21	—	✓					✓					✓
721-1	31758	1" Conduit Size Slug-Buster® Punch	1"	—	1.362	34.6	—	—	✓					✓					✓
126AV	04011	1" Conduit Size Die	1"	—	1.362	34.6	—	—	✓					✓					✓
721-1-1/4	31759	1-1/4" Conduit Size Slug-Buster® Punch	1-1/4"	1-11/16	1.701	43.2	—	—	✓					✓					✓
128AV	04013	1-1/4" Conduit Size Die	1-1/4"	1-11/16	1.701	43.2	—	—	✓					✓					✓
721-1-1/2	31760	1-1/2" Conduit Size Slug-Buster® Punch	1-1/2"	1-15/16	1.951	49.6	—	—	✓					✓					✓
440AV	04061	1-1/2" Conduit Size Die	1-1/2"	1-15/16	1.951	49.6	—	—	✓					✓					✓
721-2	31761	2" Conduit Size Slug-Buster® Punch	2"	2-3/8	2.416	61.5	—	—	✓					✓					✓
442AV	04063	2" Conduit Size Die	2"	2-3/8	2.416	61.5	—	—	✓					✓					✓
31969	31969	Slug-Buster® Punch	—	—	0.598	15.2	9	—							✓				
32002	32002	Die	—	—	0.598	15.2	9	—							✓				
31970	31970	Slug-Buster® Punch	—	—	0.732	18.6	11	—							✓				
32003	32003	Die	—	—	0.732	18.6	11	—							✓				
31971	31971	Slug-Buster® Punch	—	—	0.803	20.4	13	20						✓	✓				
32004	32004	Die	—	—	0.803	20.4	13	20						✓	✓				
721-1/2	31756	Slug-Buster® Punch	1/2"	7/8	0.885	22.5	16	—						✓					
14722	14722	Die	1/2"	7/8	0.885	22.5	16	—						✓					
31973	31973	Slug-Buster® Punch	3/4"	—	1.115	28.3	21	—						✓					
32006	32006	Die	3/4"	—	1.115	28.3	21	—						✓					
36284	36284	30.5 mm Slug-Buster® Punch	—	1-7/32	1.210	30.5	—	—						✓					
36279	36279	30.5 mm Die	—	1-7/32	1.210	30.5	—	—						✓					
35163	35163	ISO-16 Slug-Buster® Punch	—	—	0.638	16.2	—	16											
35162	35162	ISO-16 Die	—	—	0.638	16.2	—	16											✓
35165	35165	ISO-25 Slug-Buster® Punch	—	1	1.000	25.4	—	25											
35164	35164	ISO-25 Die	—	1	1.000	25.4	—	25											✓
35169	35169	ISO-32 Slug-Buster® Punch	—	—	1.280	32.5	—	32											
35168	35168	ISO-32 Die	—	—	1.280	32.5	—	32											✓
35158	35158	ISO-40 Slug-Buster® Punch	—	—	1.595	40.5	—	40											
35159	35159	ISO-40 Die	—	—	1.595	40.5	—	40											✓
34288	34288	Quick Draw® Hydraulic Punch Driver												✓					
33786	33786	Quick Draw 90® Hydraulic Punch Driver																	✓
10383	10383	Quick Draw® Flex Driver							✓	✓									
1614SS	30043	Draw Stud-3/8" x 2-13/16"							✓	✓	✓	✓	✓	✓	✓	✓	✓	✓	✓
31872	31872	Draw Stud-3/4" x 4-1/8"							✓	✓	✓	✓	✓	✓	✓	✓	✓	✓	✓
1924AA	03248	Spacer-Short							✓	✓	✓	✓	✓	✓	✓	✓	✓	✓	✓
33967	33967	Stud Adapter-3/8"							✓	✓	✓	✓	✓	✓	✓	✓	✓	✓	✓
35202	35202	Plastic Case									✓	✓		✓	✓	✓			
34983	34983	Plastic Case										✓	✓						✓
10391	10391	Plastic Case								✓	✓								
Optional Accessories for 7806SB, 7804E, 7804ESB, 7804ISO, 7906SB, 7904E, 7904ESB and 7904ISO Kits (not included in kits)																			
29451	29451	7/16" (11.1 mm) Stainless Steel Draw Stud																	